

RayBiotech, Inc.

3607 Parkway Lane suite 200
Norcross, GA 30092
Tel: 770-729-2992, 1-888-494-8555
Fax: 770-206-2393
Website: www.raybiotech.com
Email: info@raybiotech.com

Certificate of Analysis and Data Sheet

Rabbit anti-Migration Inhibitory Factor antibody

Catalog No. 130-10009	Isotype: Rabbit Ig G	Species: Human	Accession No: NP_002406
---------------------------------	--------------------------------	--------------------------	-----------------------------------

Description

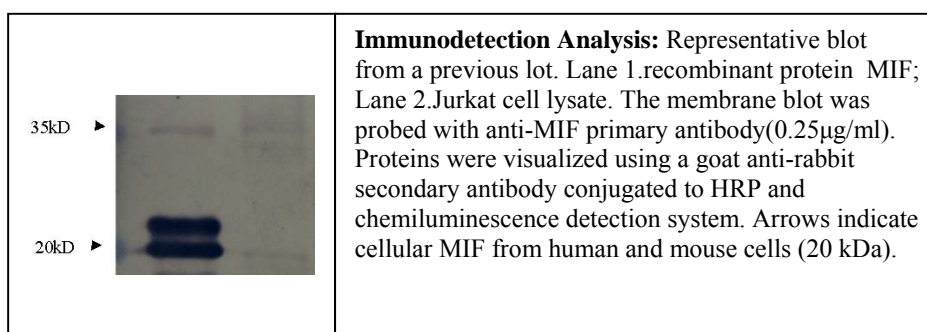
MIF (Migration Inhibitory Factor) is known as a mediator of cellular immunity with specific effects on the differentiation of mononuclear phagocytes. The expression of MIF activity correlates well with delayed hypersensitivity and cellular immunity in humans and MIF is now recognized as a principal cytokine modulating T-cell/macrophage interactions in the expression of delayed hypersensitivity and acquired cellular immunity. MIF activity can be detected in the synovia of patients with rheumatoid arthritis.

Applications

Table Summary of antibody applications and working conditions

Options Functions	YES	NO	Not determined	Recommended Work dilution or concentration
ELISA	*			1:40000(at least detecting 25ng/ml)
Western Blotting	*			1:1000-5000(at least)
Enzyme Immunoassay(EIA)			*	

Note: Other applications are not tested yet. Optimal dilutions should be determined by each laboratory for each application.



**The products are furnished for LABORATORY RESEARCH USE ONLY.
Not for diagnostic or therapeutic use.**



RayBiotech, Inc.

3607 Parkway Lane suite 200
Norcross, GA 30092
Tel: 770-729-2992, 1-888-494-8555
Fax: 770-206-2393
Website: www.raybiotech.com
Email: info@raybiotech.com

Preparation

Immunogen was a partial length of recombinant protein of human Migration Inhibitory Factor. This antibody was produced from a rabbit immunized with the immunogen. The IgG fraction was purified from rabbit serum followed by Protein A/G affinity chromatography.

Specificity

The rabbit anti-human Migration Inhibitory Factor antibody detects specifically target derived from human recombinant protein as well as Jurkat cell lysates. Cross reactivity with mouse and rat MIF was not tested yet.

Reconstitution

Supplied as lyophilized and purified antibody originally containing PBS, without **Preservative Stabilizers**, liking Sodium Azide. *It final concentration is indicated in shipping vial.*

The antibody is stable for at least years from the data of receipt when stored at -20°C to -70°C . Reconstituted antibody (suggesting with sterile PBS) can also be aliquotted and stored frozen at -20°C to -70°C in a manual defrost freezer for months without detectable loss activity. Upon reconstitution, the antibody can also be stored over months at 4°C . **Please avoid freeze-thaw cycles.**

Storage

Store at -20°C , if not intended for use within a month, keep it at 4°C and minimize freezing and thawing when use.

Related products

1. Human MIF ELISA Kit For Serum, Plasma, Cell Culture Supernatant and Urine (cat#ELH-MIF-001)
2. MIF: C22H33N5O5, MW: 447.54(H-Tyr-Pro-Leu-Gly-NH₂) (cat#CG55187)
3. Recombinant Human Macrophage Migration Inhibitory Factor (MIF) / Glycosylation-Inhibiting Factor, Western Blot Control (cat#230-00007-WBC)

Reference

Lue H, Kleemann R, Calandra T, Roger T, Bernhagen J (2002). Macrophage migration inhibitory factor (MIF): mechanisms of action and role in disease. *Microbes Infect.* 4 (4): 449–60. doi:10.1016/S1286-4579(02)01560-5. PMID 11932196

**The products are furnished for LABORATORY RESEARCH USE ONLY.
Not for diagnostic or therapeutic use.**