



## RayBiotech, Inc.

3607 Parkway Lane suite 100  
Norcross, GA 30092  
Tel: 770-729-2992, 1-888-494-8555  
Fax: 770-206-2393  
Website: [www.raybiotech.com](http://www.raybiotech.com)  
Email: [info@raybiotech.com](mailto:info@raybiotech.com)

### Certificate of Analysis and Data Sheet

## Rabbit Anti-Human Creatine Kinase B Antibody

<b>Catalog No:</b> 130-10062	<b>Isotype:</b> Rabbit Ig G	<b>Species:</b> Human	<b>Accession No:</b> P12277
---------------------------------	--------------------------------	--------------------------	--------------------------------

### Description

Creatine phosphokinase, also known as creatine kinase (CK), is an enzyme expressed by various tissues and cell types. CK catalyses the conversion of creatine and consumes adenosine triphosphate (ATP) to create phosphocreatine and adenosine diphosphate (ADP). In cells, the "cytosolic" CK enzymes consist of two subunits, which can be either B (brain type) or M (muscle type).

### Applications

Summary of antibody applications and working conditions

Options Functions	YES	NO	Not determined	Recommended Work dilution or concentration
ELISA	*			1:40000
Western Blotting	*			1:1000
Enzyme Immunoassay(EIA)			*	
Immunohistology - paraffin			*	
Immunohistology - resin			*	
Immunoprecipitation			*	
Flow Cytometry			*	
Neutralization			*	

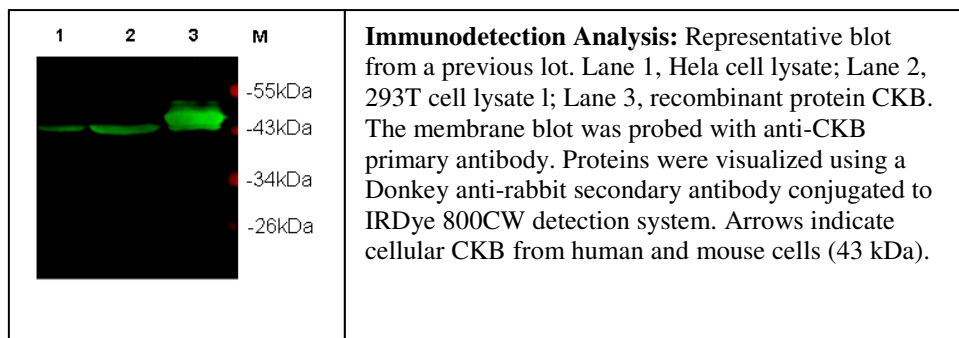
Note: Other applications are not tested yet. Optimal dilutions should be determined by each laboratory for each application

**The products are furnished for LABORATORY RESEARCH USE ONLY.  
Not for diagnostic or therapeutic use.**



## RayBiotech, Inc.

3607 Parkway Lane suite 100  
Norcross, GA 30092  
Tel: 770-729-2992, 1-888-494-8555  
Fax: 770-206-2393  
Website: [www.raybiotech.com](http://www.raybiotech.com)  
Email: [info@raybiotech.com](mailto:info@raybiotech.com)



## Preparation

Immunogen was recombinant protein derived from Human CKB. This antibody was produced from a rabbit immunized with the immunogen. The IgG fraction was purified from rabbit serum by ammonium sulphate precipitation followed by Protein A/G affinity chromatography.

## Specificity

The rabbit anti-human CKB antibody specifically detects the target derived from human recombinant protein as well as cell lysates of 293T and Hela at various concentrations. Cross reactivity with mouse and rat are expected from sequence similarity.

## Reconstitution

Supplied as lyophilized and purified antibody originally containing PBS, without preservative stabilizers, liking sodium azide. Reconstitute the antibody with sterile 1 X PBS. The final concentration is 1 mg/ml. Avoid repeated freeze-thaw cycles.

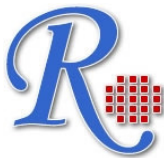
## Storage

The antibody is stable for at least years from the data of receipt when stored at -20 °C to -70 °C. Reconstituted antibody (suggesting with sterile PBS) can be aliquoted and stored frozen at -20 °C to -70 °C in a manual defrost freezer for months without detectable loss activity. Upon reconstitution, the antibody can also be stored at 4 °C for 1 month. Store at -20 °C, if not intended for use within a month. **Please avoid freeze-thaw cycles, as this will lower the activity of the antibody.**

## Related products

1. Mouse Anti-Human Creatine Kinase BB(cat#DS-MB-01067)
2. RayBio® Human Chemokine Antibody Array 1 (cat#AAH-CHE-1-8)

**The products are furnished for LABORATORY RESEARCH USE ONLY.  
Not for diagnostic or therapeutic use.**



## **RayBiotech, Inc.**

3607 Parkway Lane suite 100  
Norcross, GA 30092  
Tel: 770-729-2992, 1-888-494-8555  
Fax: 770-206-2393  
Website: [www.raybiotech.com](http://www.raybiotech.com)  
Email: [info@raybiotech.com](mailto:info@raybiotech.com)

---

### ***Reference***

Bürklen TS, et al.. (2007) Brain-type creatine kinase BB-CK interacts with the Golgi Matrix Protein GM130 in early prophase. Mol Cell Biochem. 297(1-2):53-64.

Wallimann T, et al.. (1994) Creatine kinase in non-muscle tissues and cells. Mol Cell Biochem. 133-134:193-220.

**The products are furnished for LABORATORY RESEARCH USE ONLY.  
Not for diagnostic or therapeutic use.**