



## RayBiotech, Inc.

3607 Parkway Lane suite 100  
Norcross, GA 30092  
Tel: 770-729-2992, 1-888-494-8555  
Fax: 770-206-2393  
Website: [www.raybiotech.com](http://www.raybiotech.com)  
Email: [info@raybiotech.com](mailto:info@raybiotech.com)

### Certificate of Analysis and Data Sheet

## Rabbit Anti-Human GPBB Antibody

<b>Catalog No:</b> 130-10067	<b>Isotype:</b> Rabbit IgG	<b>Species:</b> Human	<b>Accession No:</b> P11216
---------------------------------	-------------------------------	--------------------------	--------------------------------

### Description

Glycogen phosphorylase is an important enzyme in carbohydrate metabolism and catalyzes the degradation of glycogen by releasing glucose-1-phosphate from the terminal alpha-1,4-glycosidic bond. The glycogen phosphorylase is a large peptide with 842 amino acids. The two identical subunits form the active dimer including the catalytic sites, glycogen binding sites, and allosteric sites. In mammals, the major isozymes of glycogen phosphorylase are distributed in muscle, liver, and brain. The brain form is predominant in adult brain and embryonic tissues, whereas the liver and muscle types are predominant in adult liver and skeletal muscle, respectively. The brain isoform of glycogen phosphorylase has been suggested as a biomarker for gastric cancer.

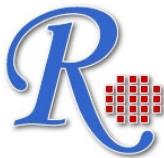
### Applications

Summary of antibody applications and working conditions

<b>Options</b> <b>Functions</b>	<b>YES</b>	<b>NO</b>	<b>Not determined</b>	<b>Recommended work dilution</b>
ELISA	*			1:80000
Western Blotting	*			1:1000
Enzyme Immunoassay(EIA)			*	
Immunohistology - paraffin			*	
Immunohistology - resin			*	
Immunoprecipitation			*	
Flow Cytometry			*	
Neutralization			*	

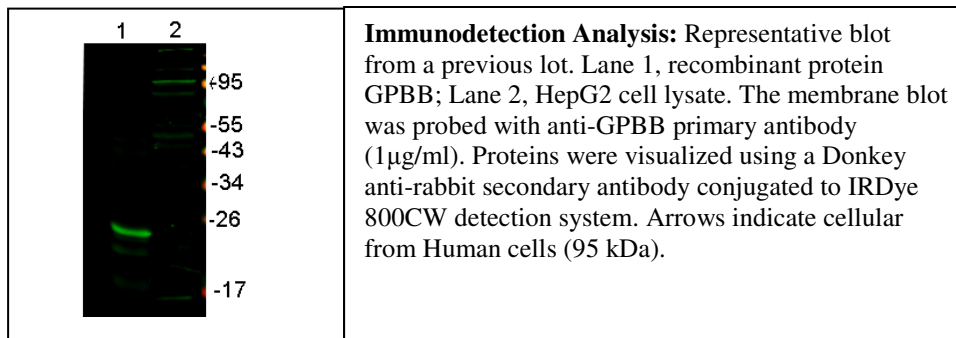
Note: Other applications are not tested yet. Optimal dilutions should be determined by each laboratory for each application

**The products are furnished for LABORATORY RESEARCH USE ONLY.  
Not for diagnostic or therapeutic use.**



## RayBiotech, Inc.

3607 Parkway Lane suite 100  
Norcross, GA 30092  
Tel: 770-729-2992, 1-888-494-8555  
Fax: 770-206-2393  
Website: [www.raybiotech.com](http://www.raybiotech.com)  
Email: [info@raybiotech.com](mailto:info@raybiotech.com)



## Preparation

The Immunogen was recombinant protein derived from human GPBB. This antibody was produced from a rabbit immunized with the immunogen. The IgG fraction was purified from rabbit serum followed by Protein A/G affinity chromatography.

## Specificity

This antibody binds to Human GPBB. Cross reactivity with mouse and rat are expected from sequence similarity.

## Reconstitution

Product is supplied as a powder obtained from lyophilization of purified antibody in PBS without preservatives. Reconstitute the antibody with sterile 1x PBS to a final concentration of 1 mg/ml.

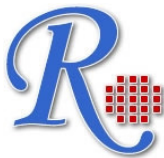
## Storage

Store at 4°C if intended for use within one month, otherwise, store at -20°C to -80°C. The lyophilized antibody is stable for at least 18 months after the date of receipt when stored at -20°C to -80°C. After reconstitution, it can be aliquoted and stored frozen at -20°C to -80°C in a manual defrost freezer for at least 6 months without detectable loss of activity. Upon reconstitution, the antibody can also be stored for 1 month at 4°C. **Please avoid freeze-thaw cycles, as this will lower the activity of the antibody.**

## Related products

1. Native Human Glycogen Phosphorylase Isoenzyme BB (catalog #: MD-17-0012P )
2. Recombinant Human Glycogen Phosphorylase Isoenzyme BB, brain specific (catalog #: 230-00042)

**The products are furnished for LABORATORY RESEARCH USE ONLY.  
Not for diagnostic or therapeutic use.**



## **RayBiotech, Inc.**

3607 Parkway Lane suite 100  
Norcross, GA 30092  
Tel: 770-729-2992, 1-888-494-8555  
Fax: 770-206-2393  
Website: [www.raybiotech.com](http://www.raybiotech.com)  
Email: [info@raybiotech.com](mailto:info@raybiotech.com)

---

### ***Reference***

Pudil R, et al. (2010) Plasma glycogen phosphorylase BB is associated with pulmonary artery wedge pressure and left ventricle mass index in patients with hypertrophic cardiomyopathy. Clin Chem Lab Med. 48(8):1193-5.

Tashima S, et al. (2000) Expression of brain-type glycogen phosphorylase is a potentially novel early biomarker in the carcinogenesis of human colorectal carcinomas. Am J Gastroenterol. 95(1):255-63.

**The products are furnished for LABORATORY RESEARCH USE ONLY.  
Not for diagnostic or therapeutic use.**