



## RayBiotech, Inc.

3607 Parkway Lane suite 100  
Norcross, GA 30092  
Tel: 770-729-2992, 1-888-494-8555  
Fax: 770-206-2393  
Website: [www.raybiotech.com](http://www.raybiotech.com)  
Email: [info@raybiotech.com](mailto:info@raybiotech.com)

### Certificate of Analysis and Data Sheet

## Rabbit Anti-Human KLK3 Antibody

<b>Catalog No:</b> 130-10069	<b>Isotype:</b> Rabbit IgG	<b>Species:</b> Human	<b>Accession No:</b> P07288
---------------------------------	-------------------------------	--------------------------	--------------------------------

### Description

Kallikrein-3 (Prostate-specific antigen, PSA, KLK3) is a glycoprotein of approximately 30 kDa found mainly in prostatic tissue and seminal fluid. KLK3 is also present in small quantities in the serum of normal men and is often elevated in the presence of prostate cancer and in other prostate disorders.

KLK3 function in the liquefaction of seminal coagulum, through hydrolysis of the high molecular mass seminal vesicle protein. Its substrates includes semenogelin I & II, fibronectin, insulin-like growth factor binding protein 3 (IGBP3), and laminin. Highly expressed by normal and malignant prostate cancer cells, PSA has been implicated in the growth, invasion, and metastasis of prostate cancer cells. Therefore, KLK3 is widely used as a diagnostic marker for prostate cancer.

### Applications

Summary of antibody applications and working conditions

<b>Options</b> <b>Functions</b>	<b>YES</b>	<b>NO</b>	<b>Not determined</b>	<b>Recommended work dilution</b>
ELISA	*			1:40000
Western Blotting	*			1:1000
Enzyme Immunoassay(EIA)			*	
Immunohistology - paraffin			*	
Immunohistology - resin			*	
Immunoprecipitation			*	
Flow Cytometry			*	
Neutralization			*	

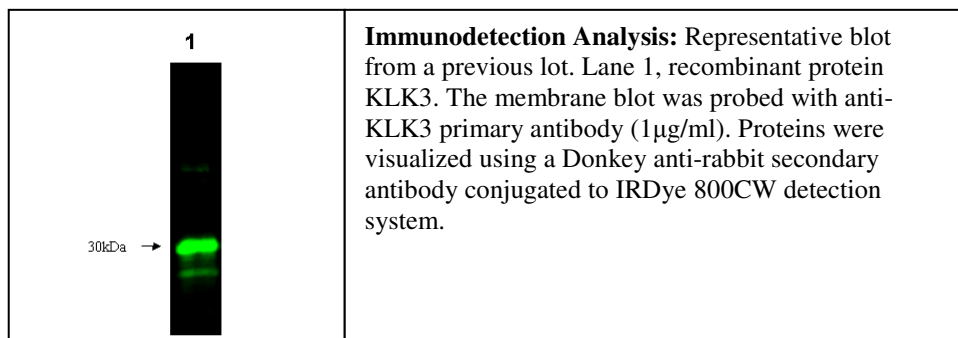
Note: Other applications are not tested yet. Optimal dilutions should be determined by each laboratory for each application

**The products are furnished for LABORATORY RESEARCH USE ONLY.  
Not for diagnostic or therapeutic use.**



## RayBiotech, Inc.

3607 Parkway Lane suite 100  
Norcross, GA 30092  
Tel: 770-729-2992, 1-888-494-8555  
Fax: 770-206-2393  
Website: [www.raybiotech.com](http://www.raybiotech.com)  
Email: [info@raybiotech.com](mailto:info@raybiotech.com)



## Preparation

Immunogen was recombinant protein derived from human KLK3. This antibody was produced from a rabbit immunized with the immunogen. The IgG fraction was purified from rabbit serum followed by Protein A/G affinity chromatography.

## Specificity

This antibody binds to Human KLK3. Cross reactivity with mouse and rat are expected from sequence similarity.

## Reconstitution

Product is supplied as a powder obtained from lyophilization of purified antibody in PBS without preservatives. Reconstitute the antibody with sterile 1x PBS to a final concentration of 1 mg/ml.

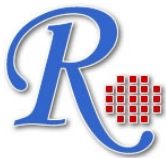
## Storage

Store at 4°C if intended for use within one month, otherwise, store at -20°C to -80°C. The lyophilized antibody is stable for at least 18 months after the date of receipt when stored at -20°C to -80°C. After reconstitution, it can be aliquoted and stored frozen at -20°C to -80°C in a manual defrost freezer for at least 6 months without detectable loss of activity. Upon reconstitution, the antibody can also be stored for 1 month at 4°C. **Please avoid freeze-thaw cycles, as this will lower the activity of the antibody.**

## Related products

1. Native Human Prostate Specific Antigen (catalog #: DS-01-0370)
2. Mouse Anti-Human Prostate Specific Antigen (catalog #: DS-MB-02172)

**The products are furnished for LABORATORY RESEARCH USE ONLY.  
Not for diagnostic or therapeutic use.**



## **RayBiotech, Inc.**

3607 Parkway Lane suite 100  
Norcross, GA 30092  
Tel: 770-729-2992, 1-888-494-8555  
Fax: 770-206-2393  
Website: [www.raybiotech.com](http://www.raybiotech.com)  
Email: [info@raybiotech.com](mailto:info@raybiotech.com)

---

### ***Reference***

Emami N, et al. (2008) Utility of kallikrein-related peptidases (KLKs) as cancer biomarkers. Clin Chem. 54(10):1600-7.

Lundwall A, et al. (2008) Kallikrein-related peptidases. Cell Mol Life Sci. 65(13):2019-38.

**The products are furnished for LABORATORY RESEARCH USE ONLY.  
Not for diagnostic or therapeutic use.**