



RayBiotech, Inc.

The protein array pioneer company

www.Raybiotech.com

3607 Parkway Lane, Suite 200,
Norcross, GA 30092

Tel: 770-729-2992, 1-888-494-8555

Fax: 770-206-2393

E-mail: info@raybiotech.com

Certificate of Analysis and Data Sheet

Recombinant Human Galectin-3

[Product Catalog # 230-00202](#)

Synonyms

Lectin, galactoside-binding, soluble,3; Laminin-binding protein; GALBP; Galactose-specific lectin 3; Galactose-specific lectin 3.

Source

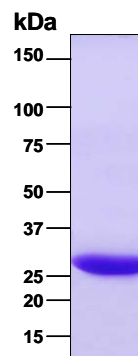
- *Escherichia coli* derived.
- Protein Accession #.AAX37050, Ala2-Ile250 (full-length).

Predicted Molecular Mass

~ 27 kDa.

Purity

>95%, determined by SDS-PAGE under reducing conditions and visualized by Coomassie blue staining (See the image above).



Formulation

Liquid, clear solution. Supplied as a 0.2 μ m filtered solution in PBS (pH 7.4) with 10% glycerol.

Concentration

Lot specific (see the label on the vial).

Stability & Storage

Upon arrival, the protein may be stored for two weeks at 2 to 8 °C. For long term storage, it is recommended to add a carrier protein (0.1% HSA or BSA) and store at -20 °C or -80 °C in aliquots. ***Avoid repeated freeze-thaw cycles.**

**The products are furnished for LABORATORY RESEARCH USE ONLY.
Not for therapeutic use.**