



RayBiotech, Inc.

The protein array pioneer company

www.Raybiotech.com

3607 Parkway Lane, Suite 200,
Norcross, GA 30092

Tel: 770-729-2992, 1-888-494-8555

Fax: 770-206-2393

E-mail: info@raybiotech.com

Certificate of Analysis and Data Sheet

Recombinant Human Placental Growth Factor, PLGF

[Product Catalog # 230-00225](#)

Synonyms

Placental growth factor, vascular endothelial growth factor-related protein1, PLGF

Source

- *Escherichia coli* derived.
- Protein Accession #.AAH01422, Ala21- Arg170.
- Containing an *N*-terminal 6× histidine tag

Predicted Molecular Mass

~ 17 kDa.

Purity

>95%, determined by SDS-PAGE under reducing conditions and visualized by Commassie blue staining (*see the image above*).

Formulation

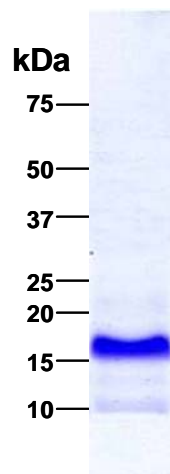
Liquid, clear solution. Supplied as a 0.2 µm filtered solution in 100 mM NaH₂PO₄, 10 mM Tris-HCl, 8 M urea, 10 mM imidazole, pH 8.0.

Concentration

Lot specific (*see the label on the vial*).

Stability & Storage

Upon arrival, the protein may be stored for two weeks at 2 to 8 °C. For long term storage, it is recommended to add a carrier protein (0.1% HSA or BSA) and store at -20 °C or -80 °C in aliquots. **Avoid repeated freeze-thaw cycles.**



**The products are furnished for LABORATORY RESEARCH USE ONLY.
Not for therapeutic use.**