

**RayBiotech, Inc.**

The protein array pioneer company

[www.Raybiotech.com](http://www.Raybiotech.com)

3607 Parkway Lane, Suite 100,  
Norcross, GA 30092

Tel: 770-729-2992, 1-888-494-  
8555

Fax: 770-206-2393

---

## Certificate of Analysis and Data Sheet

### Recombinant Human Midkine (MDK) Product Catalog # 230-00233

#### **Synonyms**

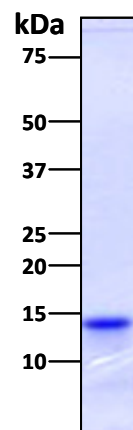
Midkine, MDK, amphiregulin-associated protein.

#### **Source**

- *Escherichia coli* derived.
- Protein accession #: AAH11704, Lys23 - Asp143.
- Containing an N-terminal 6× histidine tag.

#### **Predicted Molecular Mass**

~ 13 kDa.



#### **Purity**

>95%, determined by SDS-PAGE under reducing conditions and visualized by Coomassie blue staining (see the image above).

#### **Formulation**

Lyophilized from a 0.2 µm filtered solution in PBS. Protein concentration prior to lyophilization was 0.33 mg/mL.

#### **Reconstitution**

Briefly spin the vial and bring the contents to the bottom prior to opening. It is recommended to reconstitute at 0.5 mg/mL with sterile deionized water.

#### **Stability & Storage**

- Upon arrival, the lyophilized products may be stored for 2 weeks at 2 to 8 °C. For long term storage, it is recommended to be stored desiccated below -20 °C in a manual defrost freezer.
- Following reconstitution, the protein may be stored for 2 weeks at 2 to 8 °C. For long term storage, it is recommended to add a carrier protein (0.1% HSA or BSA) and store at -20 °C or -80 °C in aliquots. **Avoid repeated freeze-thaw cycles.**

---

**The products are furnished for LABORATORY RESEARCH USE ONLY.  
Not for therapeutic use.**