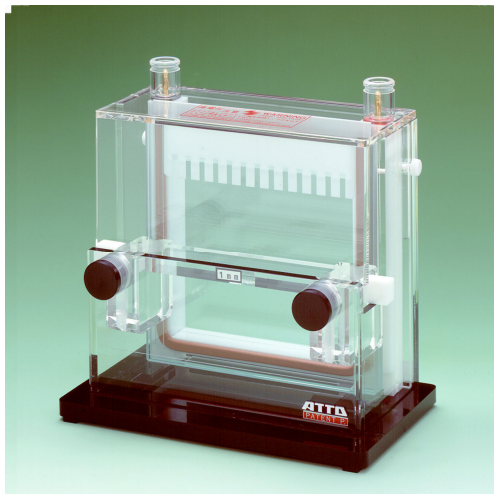


Slab Size Electrophoresis System

AE-6200 Slab EP Chamber



AE-6200 Slab EP Chamber

- Including a safety cover, a pair of power leads, and a pressure platen. Ready to run 1 gel.
- Combs and plates are not included. Please use with AE-6210 Slab Gel Cast.

Code No.	Type	Name
2392044	AE-6200	Slab EP Chamber

Features

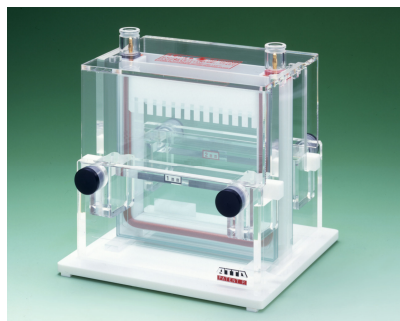
- Simple specifications, so samples are easily seen during addition and it is always clean since cleaning is easy
- Safe operation with a safety cover with lead wire without using metal clips
- Various combs are available

Specifications

Name	AE-6200 Slab EP Chamber
Plate size	160 (W) x 160 (L) x 10.5 - 12 (T) mm
Gel size	138 (W) x 130 (H) mm For gel thickness of 0.5 - 2.0 mm
Number of gels	1 gel
Plate setting	With pressure platen
Temperature control	Single face
Buffer volume	300 mL for upper chamber, 350 mL for lower chamber
Cover lid	Safety lid with lead wires
Material	Acrylic plastic and stainless steel
Dimensions	214 (W) x 121 (D) x 188 (H) mm, excluding power leads, 1.6 kg (without accessories)
Complete with:	1 electrophoresis chamber incl. a safety cover with power leads.

Slab Size Electrophoresis System

AE-6220 Dual Slab Chamber



AE-6220 Dual Slab Chamber

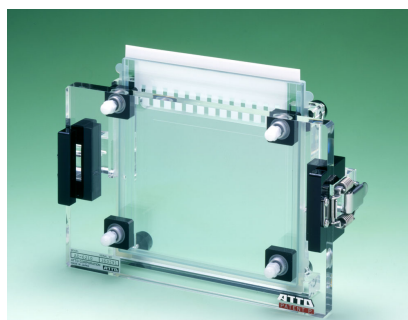
- Including a safety cover, a pair of power leads, two pressure platens. Ready to run 2 gels.
- Combs and plates are not included. Please use with 2 sets of AE-6210 Slab Gel Cast.
- 2-channel model of the AE-6200
- Various combs are available
- For use of AE-6220, 2 sets of AE-6210 required

Code No.	Type	Name
2392085	AE-6220	Dual Slab Chamber

Specifications

Name	AE-6220 Slab EP Chamber
Plate size	160 (W) x 160 (L) x 10.5 - 12 (T) mm
Gel size	138 (W) x 130 (H) mm For gel thickness of 0.5 - 2.0 mm
Number of gels	Up to 2 gels
Plate setting	With pressure platen
Temperature control	Single face
Buffer volume	480 mL for upper chamber, 450 mL for lower chamber
Cover lid	Safety lid with lead wires
Material	Acrylic plastic and stainless steel
Dimensions	211 (W) x 196 (D) x 205 (H) mm, excluding power leads, 2.3 kg (without accessories)
Complete with:	1 electrophoresis chamber incl. a safety cover with power leads.

AE-6210 Slab Gel Cast



AE-6210 Dual Slab Chamber

- Easy gel preparation with specially designed parts and seal gaskets

Specifications

Name	AE-6210 Slab Gel Cast
Plate size	160 (W) x 160 (L) x 10.5 - 12 (T) mm
Gel size	138 (W) x 130 (H) mm For gel thickness of 0.5 - 2.0 mm
Material	Acrylic plastic and stainless steel except silicone rubber for gaskets and glass for plates
Dimensions	250 (W) x 150 (D) x 80 (H) mm, 1.0 kg (without glass plates)

[2392016] AE-6210 Slab Gel Cast, 1-mm 12-well

[2392017] AE-6210 Slab Gel Cast, 2-mm 12-well

Including a pair of glass plates, a gasket, and a comb, ready to cast a 1 or 2 mm, 12-well gel

[2392010] AE-6210 Slab Gel Cast, 1mm

[2392011] AE-6210 Slab Gel Cast, 2mm

Including a pair of glass plates, a gasket, to cast a 2 mm gel, but without comb

[2392012] AE-6210 Slab Gel Cast, Without glass plate, gasket and comb