

Recombinant Human RELM- β

CATALOG #: 4654-25 25 μ g
4654-100 100 μ g
4654-1000 1 mg

LOT #: _____

SOURCE: *E. coli*

PURITY: >95% by SDS-PAGE and HPLC analyses
Endotoxin level is <0.1 ng per μ g of RELM- β

MOL. WEIGHT: 11.0 kDa

FORMULATION: Lyophilized with no additives

RECONSTITUTION:

Centrifuge the vial prior to opening. Reconstitute to 1 mg/ml with sterilized dH₂O. Pipet to dissolve the protein pellet completely.

STORAGE CONDITIONS:

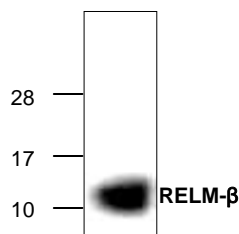
The lyophilized protein is best-stored desiccated below 0°C. Reconstituted RELM- β should be stored at working aliquots at -20°C. Avoid freeze/thaw cycles. At 4°C, the protein is stable for at least one week.

DESCRIPTION:

Human RELM beta (Resistin-like molecule beta/FIZZ2) is a new member to the family of adipocyte secreted proteins called adipocytokines. This family includes the RELM alpha, RELM beta and Resistin molecules. Interestingly, RELM beta and Resistin share similar characteristics such as an additional cysteine residue within the variable N-terminal region and are both homodimeric proteins. However, the RELM beta is expressed only in the gastrointestinal track; especially the colon, while the Resistin and RELM beta are secreted exclusively by adipocytes. Currently, the biological function of these proteins, as well as their molecular targets is largely unknown. Recombinant Human RELM beta is a disulfide-linked homodimer with a total molecular weight of 11.0 kDa, consisting of 90 amino acid residue chains.

PROTEIN SEQUENCE:

MQCSLDSVMDKKIKDVLNSLEYSPSPISKKLSCASVKSQGRPSSCPAGMAVTGCACGYGCGSW
DVQLETTCHCQCSVVDWTTARCCHLT



Cat. #: 4654-25

Purity of recombinant human RELM- β (2 μ g) was analyzed by reduced SDS-PAGE electrophoresis.

RELATED PRODUCTS:

Apoptosis Detection Kits & Reagents

- Annexin V Kits & Bulk Reagents
- Caspase Assay Kits & Reagents
- Mitochondrial Apoptosis Kits & Reagents
- Nuclear Apoptosis Kits & Reagents
- Apoptosis Inducers and Set
- Apoptosis siRNA Vectors

Cell Fractionation System

- Mitochondria/Cytosol Fractionation Kit
- Nuclear/Cytosol Fractionation Kit
- Membrane Protein Extraction Kit
- Cytosol/Particulate Rapid Separation Kit
- Mammalian Cell Extraction Kit
- FractionPREP Fractionation System

Cell Proliferation & Senescence

- Quick Cell Proliferation Assay Kit
- Senescence Detection Kit
- High Throughput Apoptosis/Cell Viability Assay Kits
- LDH-Cytotoxicity Assay Kit
- Bioluminescence Cytotoxicity Assay Kit
- Live/Dead Cell Staining Kit

Cell Damage & Repair

- HDAC Fluorometric & Colorimetric Assays & Drug Discovery Kits
- HAT Colorimetric Assay Kit & Reagents
- DNA Damage Quantification Kit
- Glutathione & Nitric Oxide Fluorometric & Colorimetric Assay Kits

Signal Transduction

- cAMP & cGMP Assay Kits
- Akt & JNK Activity Assay Kits
- Beta-Secretase Activity Assay Kit

Adipocyte & Lipid Transfer

- Recombinant Adiponectin, Survivin, & Leptin
- CETP Activity Assay & Drug Discovery Kits
- PLTP Activity Assay & Drug Discovery Kits
- Total Cholesterol Quantification Kit

Molecular Biology & Reporter Assays

- siRNA Vectors
- Cloning Insert Quick Screening Kit
- Mitochondrial & Genomic DNA Isolation Kits
- 5 Minutes DNA Ligation Kit
- 20 Minutes Gel Staining/Destaining Kit
- β -Galactosidase Staining Kit & Luciferase Reporter Assay Kit

Growth Factors and Cytokines

Monoclonal and Polyclonal Antibodies

FOR RESEARCH USE ONLY! Not to be used on humans.