

MYT1L Antibody (CT)

ALTERNATE NAMES: Myelin transcription factor 1-like protein, neural zinc finger transcription factor 1, NZTF1, NZF1, NZF-1, PMNG1, PNG-1

CATALOG #: 5304-100

AMOUNT: 100 µg

HOST: Rabbit

ISOTYPE: IgG1

IMMUNOGEN: Rabbit polyclonal MYT1L antibody was raised against an 18 amino acid peptide near the carboxy terminus of human MYT1L.

PURIFICATION: Affinity chromatography purified via peptide column

FORMULATION: 100 µg (1 mg/ml) in 1X PBS containing 0.02 % sodium azide.

SPECIES REACTIVITY: Human, Mouse, Rat

STORAGE CONDITIONS: Can be stored at 4°C for three months. For long term storage, store at -20°C. Avoid freeze/thaw cycles.

DESCRIPTION:

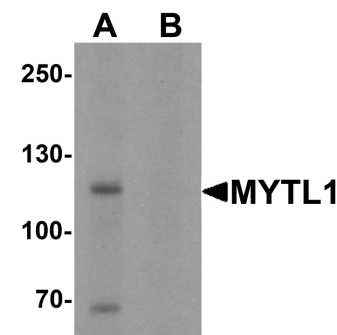
The myelin transcription factor 1 family, to which the myelin transcription factor 1-like protein (MYT1L) belongs, is expressed primarily in the developing central nervous system and recruits histone deacetylase (HDAC) to regulate neural transcription. Both MYT1L and the related protein MYT1 interact with SIN3B, a protein that mediates transcriptional repression by binding to HDACs, suggesting that the MYT1 family favor the silencing of genes during neural development. Recent studies suggest that polymorphisms of MYT1L may be associated with schizophrenia.

SPECIFICITY: At least three isoforms are known to exist. This antibody will only recognize the two longest isoforms.

APPLICATION: Western Blot: 1 - 2 µg/ml, ELISA

Note: *This information is only intended as a guide. The optimal dilutions must be determined by the user*

FOR RESEARCH USE ONLY! Not to be used on humans.



Western blot analysis of MYT1L in mouse brain tissue lysate with MYT1L antibody at 1 µg/mL in (A) the absence and (B) the presence of blocking peptide.

RELATED PRODUCTS:

- Sin1 Antibody (Cat # 3971-100)
- POU3F2 Antibody (Cat # 5311-100)
-