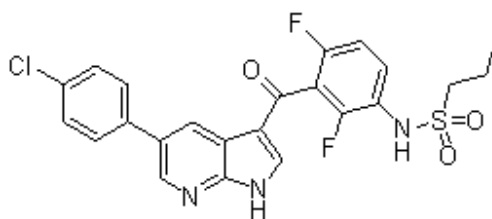




## Certificate of Analysis

**PLX-4032**

**Chemical Structure:**



|   |  |
|---|--|
| <b>CAT#:</b>                                  | A-1130   |
| <b>Formula:</b>                               | C <sub>23</sub> H <sub>18</sub> ClF <sub>2</sub> N <sub>3</sub> O <sub>3</sub> S |
| <b>M.W.:</b>                                  | 489.92   |
| <b>CAS No.:</b>                               | 1029872-54-5   |
| <b><sup>1</sup>H- and <sup>13</sup>C-NMR:</b> | Consistent with assigned structure   |
| <b>Purity:</b>                                | 99% by HPLC  |
| <b>Solubility:</b>                            | Soluble in DMSO  |
| <b>Storage:</b>                               | Room temperature, or -20°C for 2 years   |