

# SRC1 Antibody

Rabbit Polyclonal

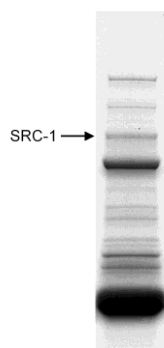
Antigen Affinity Purified

Protein ID    NP\_003734.3

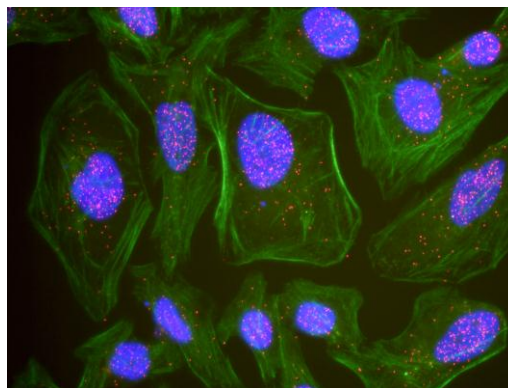
Catalog No.    A300-343A

Gene ID        8648

APPLICATIONS	WB, IP, PLA						
REACTIVITY TESTED	Human						
PRESUMED REACTIVITY	Based on 100% sequence identity, this antibody is predicted to react with Orangutan, Rhesus Monkey, Gorilla, Chimpanzee, Northern white-cheeked gibbon, and Small-eared galago.						
ISOTYPE	IgG						
AMOUNT	0.1 ml at 1 mg/ml						
STORAGE/SHELF LIFE	2 - 8° C / 1 year from date of receipt						
PHYSICAL STATE	Liquid						
BUFFER	Tris-citrate/phosphate buffer, pH 7 to 8 containing 0.1% Sodium Azide						
ORIGIN	USA						
PRODUCTION PROCEDURES	<p>Antibody was affinity purified using an epitope specific to SRC1 immobilized on solid support.</p> <p>The epitope recognized by A300-343A maps to a region between residues 600 and 650 of human Nuclear Receptor Coactivator 1 using the numbering given in entry NP_003734.3 (GeneID 8648).</p> <p>Immunoglobulin concentration was determined by extinction coefficient: absorbance at 280 nm of 1.4 equals 1.0 mg of IgG.</p>						
APPLICATIONS	<p>Centrifuge tube to remove product from lid. Optimal working dilutions should be determined experimentally by the investigator. Prepare working dilution immediately before use.</p> <table><tr><td>Western Blot</td><td>1:1,000 - 1:10,000</td></tr><tr><td>Immunoprecipitation</td><td>1 to 4 µg/mg lysate</td></tr><tr><td>Proximity Ligation Assay</td><td>1:1,000 to 1:20,000</td></tr></table>	Western Blot	1:1,000 - 1:10,000	Immunoprecipitation	1 to 4 µg/mg lysate	Proximity Ligation Assay	1:1,000 to 1:20,000
Western Blot	1:1,000 - 1:10,000						
Immunoprecipitation	1 to 4 µg/mg lysate						
Proximity Ligation Assay	1:1,000 to 1:20,000						
APPLICATION NOTES	PLA validation was performed using Duolink In Situ kits, buffers and reagents (Cat # OLK-*).						
REFERENCES	Jung SY et al., Proteomic analysis of steady-state nuclear hormone receptor coactivator complexes. Mol Endocrinol. 2005 Oct;19(10):2451-65.						



**Immunoprecipitation of SRC1.** *Samples:* Nuclear extract (10 mg) from HeLa cells. *Antibody:* Affinity purified rabbit anti-SRC1 (Cat. No. A300-343A) used at 20 µg/10 mg extract. *Detection:* Coomassie Brilliant Blue R250 staining of SDS-PAGE gel followed by mass spectrometry to confirm the identity of the band that is SRC1.



**This antibody is qualified for the Proximity Ligation Assay (PLA).** PLA uses paired antibodies, so please refer to the PLA page of our website for specific imaging obtained by pairing this antibody with other qualified antibodies. The above image shows representative results for PLA using three color fluorescence, including DAPI stained nuclei (blue), phalloidin stained cytoplasmic F-actin (green), and PLA positive signal (red).

# MATERIAL SAFETY DATA SHEET

## CONTENTS

This product contains Rabbit immunoglobulin G (IgG) protein in Tris-citrate/phosphate buffer, pH 7 to 8 containing 0.1% Sodium Azide.

## INGREDIENT DESCRIPTIONS

**HAZARDOUS:**

Sodium Azide (NaN<sub>3</sub>): Azide forms explosive chemical compounds with lead and copper plumbing. Care must be taken to wash waste down drains with large volumes of water. LD50 oral mouse 27 mg/kg. Wash all affected areas with large volumes of water and if swallowed consult your physician immediately.