

Phospho-YWHAZ-pS58 Antibody

Purified Rabbit Polyclonal Antibody (Pab)

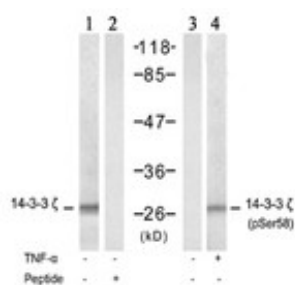
Catalog #	Accessions	Concentration	Size
AE1001b		1mg/ml	0.1 mg

Isotype

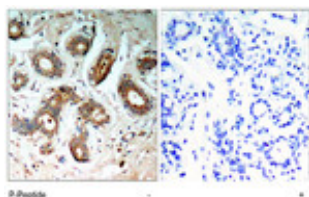
Rabbit IgG

Application data

Calculated MW : 27745 Da



Western blot analysis of extract from NIH/3T3 cells, untreated or treated with TNF-α (20ng/ml, 5min), using 14-3-3 Zeta (Delta) Antibody (S58) (#AE1001a, lane 1 and 2) and Phospho-14-3-3 Zeta (Delta)-S58 Antibody (AE1001b, lane 3 and 4).



Immunohistochemical analysis of paraffin-embedded human breast carcinoma tissue, using Phospho-14-3-3 Zeta (Delta)-S58 Antibody (#AE1001b).

Gene ID	Gene symbol
7534	YWHAZ

Other names

Protein kinase C inhibitor protein 1, KCIP-1; 14-3-3 protein zeta/delta

Target/specificity

The antibody was affinity-purified from rabbit antiserum using epitope-specific phosphopeptide column, and the antibody against non-phosphopeptide was removed using non-phosphopeptide column corresponding to the phosphorylation site.

Application notes

The suggested dilution is:
 WB: 1:500~1:1000
 IHC: 1:50-1:100
 IF: 1:100-200

Format

affinity Purified IgG, in PBS, 0.02% sodium azide and 50% glycerol.

Storage

Maintain refrigerated at 2-8 deg C for up to 6 months. For long term storage store at -20 deg C in small aliquots to prevent freeze-thaw cycles.

Background

This gene product belongs to the 14-3-3 family of proteins which mediate signal transduction by binding to phosphoserine-containing proteins. This highly conserved protein family is found in both plants and mammals, and this protein is 99% identical to the mouse, rat and sheep orthologs. The encoded protein interacts with IRS1 protein, suggesting a role in regulating insulin sensitivity. Several transcript variants that differ in the 5' UTR but that encode the same protein have been identified for this gene.

References

Proteome analysis of the thalamus and cerebrospinal fluid reveals glycolysis dysfunction and potential biomarkers candidates for schizophrenia. Martins-de-Souza D, et al. J Psychiatr Res, 2010 May 14. PMID 20471030. The expression of seven 14-3-3 isoforms in human meningioma. Liu Y, et al. Brain Res, 2010 Jun 8. PMID 20388496. The C-terminal segment of yeast BMH proteins exhibits different structure compared to other 14-3-3 protein isoforms. Veisova D, et al. Biochemistry, 2010 May 11. PMID 20384366. Sex-specific proteome differences in the anterior cingulate cortex of schizophrenia. Martins-de-Souza D, et al. J Psychiatr Res, 2010 Apr 8. PMID 20381070. Personalized smoking cessation: interactions between nicotine dose, dependence and quit-success genotype score. Rose JE, et al. Mol Med, 2010 Jul-Aug. PMID 20379614.



Gentaur Molecular Products
Voortstraat 49
1910 Kampenhout, Belgium