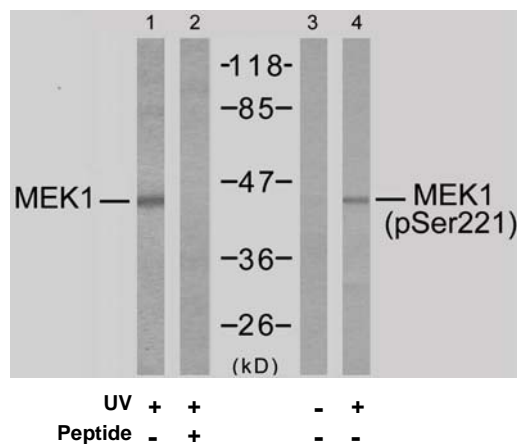


Rabbit anti MEK-1 (Ab-221)

- Catalog Number:** AP21175
Amount: 100µl (for 10 Western Blotting)
Form of Antibody: Rabbit IgG in phosphate buffered saline (without Mg²⁺ and Ca²⁺), pH 7.4, 150mM NaCl, 0.02% sodium azide and 50% glycerol.
Storage/Stability: Store at -20°C/1 year
Immunogen: The antiserum was produced against synthesized non-phosphopeptide derived from human MEK1 around the phosphorylation site of serine 221 (A-N-S^P-F-V).
Purification: The antibody was affinity-purified from rabbit antiserum by affinity-chromatography using epitope-specific immunogen.
Specificity/Sensitivity: MEK1 (Ab-221) antibody detects endogenous levels of total MEK1 protein.
Reactivity: Human, Mouse, Rat
Applications: WB: 1:1000
Swiss-Prot No. : Q02750
References: Zebisch A, et al. (2006) Cancer Res; 66(7): 3401-8.
 Luciano BS, et al. (2006) J Biol Chem; 279(50): 52117-23.
 Wang X, et al. (2003) Oncogene; 22(1): 109-16.
 Gopalbhai K, et al. (2003) J Biol Chem; 278(10): 8118-25.
 Ling MT, et al. (2002) Oncogene; 21(55): 8498-505.



Western blot analysis of extracts from Jurkat cells, using MEK1 (Ab-221) antibody (AP21175, Lane 1 and 2) and MEK1 (phospho-Ser221) antibody (pAP11161, Lane 3 and 4).

For Research Use Only

Contact & Ordering Information: Angio-Proteomie, 11 Park Drive, Suite 12, Boston, MA 02215, USA. Fax: (480) 247-4337, angioproteomie@gmail.com