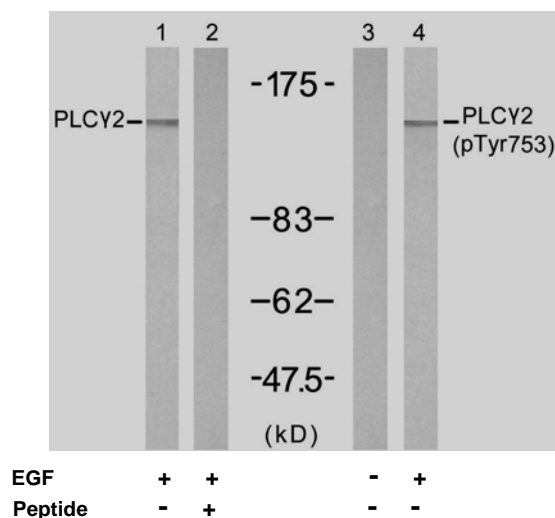




11 Park Drive, Suite 12
Boston, MA 02215

Rabbit anti PLC γ 2 (Ab-753)

- Catalog Number:** AP21186
Amount: 100 μ l (for 10 Western Blotting)
Swiss-Prot No. : P16885
Form of Antibody: Rabbit IgG in phosphate buffered saline (without Mg²⁺ and Ca²⁺), pH 7.4, 150mM NaCl, 0.02% sodium azide and 50% glycerol.
Storage/Stability: Store at -20°C/1 year
Immunogen: The antiserum was produced against synthesized non-phosphopeptide derived from human PLC γ 2 around the phosphorylation site of tyrosine 753 (S-L-Y^P-D-V).
Purification: The antibody was affinity-purified from rabbit antiserum by affinity-chromatography using epitope-specific immunogen.
Specificity/Sensitivity: PLC γ 2 (Ab-753) antibody detects endogenous levels of total PLC γ 2 protein.
Reactivity: Human, Mouse, Rat
Applications: WB: 1:1000
References: Kim YJ, et al. (2004) Mol Cell Biol 24: 9986-9999
Humphries LA, et al. (2004) J Biol Chem 279 : 37651-37661
Suzuki-Inoue K, et al. (2004) Biochem J 378 : 1023-1029
Rodriguez R, et al. (2003) Biochem J 374 : 269-280



Western blot analysis of extract from A431 cells, untreated or treated with EGF (200ng/ml, 5min), using PLC γ 2 (Ab-753) antibody (AP21186, Lane 1 and 2) and PLC γ 2 (phospho-Tyr753) antibody (pAP11175, Lane 3 and 4).

For Research Use Only

Contact & Ordering Information: Angio-Proteomie, 11 Park Drive, Suite 12, Boston, MA 02215, USA. Fax: (480) 247-4337, angioproteomie@gmail.com