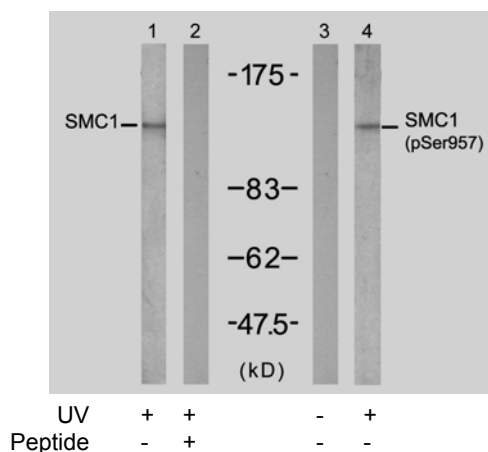


Rabbit anti SMC1 (Ab-957)

- Catalog Number:** AP21190
Amount: 100µl (for 10 Western Blotting)
Swiss-Prot No. : Q14683
Form of Antibody: Rabbit IgG in phosphate buffered saline (without Mg²⁺ and Ca²⁺), pH 7.4, 150mM NaCl, 0.02% sodium azide and 50% glycerol.
Storage/Stability: Store at -20°C/1 year
Immunogen: The antiserum was produced against synthesized non-phosphopeptide derived from human SMC1 around the phosphorylation site of serine 957 (G-S-S^P-Q-G).
Purification: The antibody was affinity-purified from rabbit antiserum by affinity-chromatography using epitope-specific immunogen.
Specificity/Sensitivity: SMC1 (Ab-957) antibody detects endogenous levels of total SMC1 protein.
Reactivity: Human, Mouse
Applications: WB: 1:1000
References: Yang XM. et al. (2004) Mol Cell Biol. 24(12): 5290-5303.
Kim ST. et al. (2002) Genes Dev. 16(5): 560-570.
Revenkova E. et al. (2001) Mol Cell Biol. 21(20): 6984-6998.



Western blot analysis of extract from K562 cells, untreated or treated with UV (20min), using SMC1 (Ab-957) antibody (AP21190, Lane 1 and 2) and SMC1 (phospho-Ser957) antibody (pAP11198, Lane 3 and 4).

For Research Use Only

Contact & Ordering Information: Angio-Proteomie, 11 Park Drive, Suite 12, Boston, MA 02215, USA. Fax: (480) 247-4337, angioproteomie@gmail.com