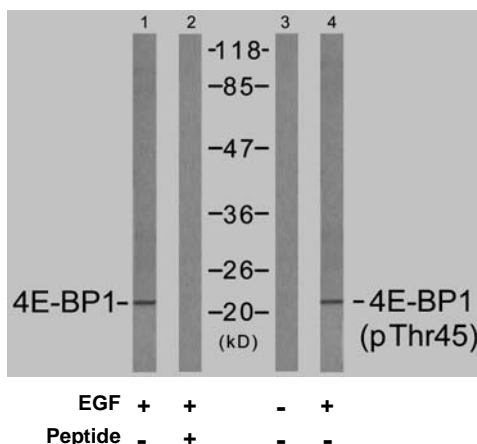


Rabbit anti 4E-BP1 (Ab-45)

- Catalog Number:** AP21216
- Amount:** 100µl (for 10 Western Blotting)
- Swiss-Prot No. :** Q13541
- Form of Antibody:** Rabbit IgG in phosphate buffered saline (without Mg²⁺ and Ca²⁺), pH 7.4, 150mM NaCl, 0.02% sodium azide and 50% glycerol.
- Storage/Stability:** Store at -20°C/1 year
- Immunogen:** The antiserum was produced against synthesized non-phosphopeptide derived from human 4E-BP1 around the phosphorylation site of threonine 45 (S-T-T^P-P-G).
- Purification:** The antibody was affinity-purified from rabbit antiserum by affinity-chromatography using epitope-specific immunogen.
- Specificity/Sensitivity:** 4E-BP1 (Ab-45) antibody detects endogenous levels of total 4E-BP1 protein. This antibody may cross-react with 4E-BP2 and 4E-BP3.
- Reactivity:** Human, Mouse, Rat
- Applications:** WB: 1:1000
- References:** Gingras AC, et al. (1998) Genes Dev 12(4): 502-513.
Brugarolas J, et al. (2004) Genes Dev 18(23): 2893-2904.
Kumar V, et al. (2000) EMBO J 19(5): 1087-1097.
Moody CA, et al. (2005) J Virol 79(9): 5499-5506.
Burnett PE, et al. (1998) Proc Natl Acad Sci U S A 95(4): 1432-1437.



Western blot analysis of extracts from MDA435 cells untreated or treated with EGF (200nm, 5min), using 4E-BP1 (Ab-45) antibody (AP21216, Lane1 and 2) and 4E-BP1 (phospho-Thr45) antibody (pAP11223, Lane 3 and 4).

For Research Use Only

Contact & Ordering Information: Angio-Proteomie, 11 Park Drive, Suite 12, Boston, MA 02215, USA. Fax: (480) 247-4337, angioproteomie@gmail.com