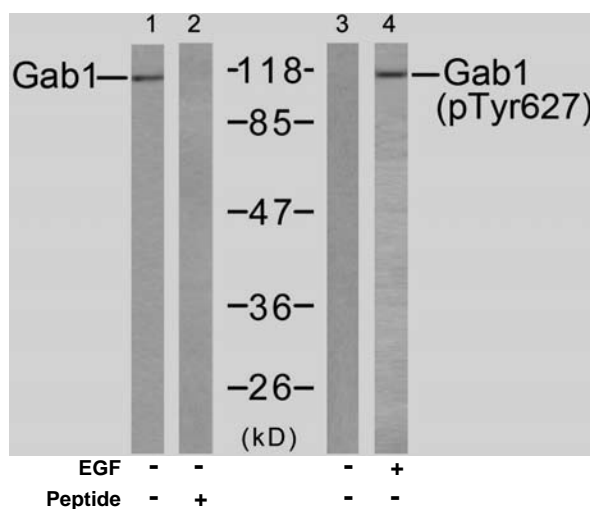


Rabbit anti Gab1 (Ab-627)

- Catalog Number:** AP21283
Amount: 100µl (for 10 Western Blotting)
Swiss-Prot No. : Q13480
Form of Antibody: Rabbit IgG in phosphate buffered saline (without Mg²⁺ and Ca²⁺), pH 7.4, 150mM NaCl, 0.02% sodium azide and 50% glycerol.
Storage/Stability: Store at -20°C/1 year
Immunogen: The antiserum was produced against synthesized non-phosphopeptide derived from human Gab1 around the phosphorylation site of tyrosine 627 (V-E-Y^P-L-D).
Purification: The antibody was affinity-purified from rabbit antiserum by affinity-chromatography using epitope-specific immunogen.
Specificity/Sensitivity: Gab1 (Ab-627) antibody detects endogenous levels of total Gab1 protein.
Reactivity: Human, Mouse
Applications: WB: 1:1000
References: Anders Kallin, et al. (2004) J. Biol. Chem; 279: 17897 - 17904.
Hideto Kameda, et al. (2001) Cell Growth Differ; 12: 307.
Masaki Osawa, et al. (2002) J. Cell Biol; 158: 773.



Western blot analysis of extracts from HUVEC cells untreated or treated with EGF (200ng/ml, 15min), using Gab1 (Ab-627) antibody (AP21283, Lane 1 and 2) and Gab1 (phospho-Tyr627) antibody (pAP11291, Lane 3 and 4).

For Research Use Only

Contact & Ordering Information: Angio-Proteomie, 11 Park Drive, Suite 12, Boston, MA 02215, USA. Fax: (480) 247-4337, angioproteomie@gmail.com