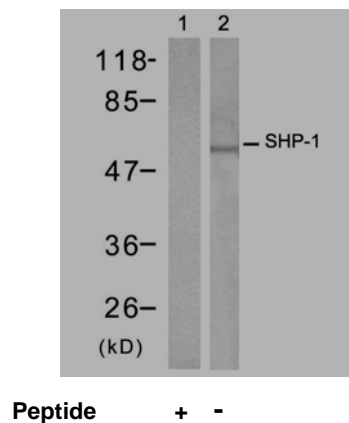




11 Park Drive, Suite 12  
Boston, MA 02215

## Rabbit anti SHP-1 (Ab-536)

- Catalog Number:** AP21318  
**Amount:** 100µl (For 10 Western Blotting)  
**Swiss-Prot No. :** P29350  
**Form of Antibody:** Rabbit IgG in phosphate buffered saline (without Mg<sup>2+</sup> and Ca<sup>2+</sup>), pH 7.4, 150mM NaCl, 0.02% sodium azide and 50% glycerol.  
**Storage/Stability:** Store at -20°C/1 year  
**Immunogen:** The antiserum was produced against synthesized non-phosphopeptide derived from human SHP-1 around the phosphorylation site of tyrosine 536 (S-E-Y<sup>P</sup>-G-N).  
**Purification:** The antibody was affinity-purified from rabbit antiserum by affinity-chromatography using epitope-specific immunogen.  
**Specificity/Sensitivity:** SHP-1 (Ab-536) antibody detects endogenous levels of total SHP-1 protein.  
**Reactivity:** Human, Mouse, Rat  
**Applications:** WB: 1:1000  
**References:** Migone TS, et al. (1998) Proc Natl Acad Sci USA; 95(7): 3845-3850.  
Timms JF, et al.(1998) Mol Cell Biol; 18(7): 3838-3850.  
Kanagasundaram V, et al. (1999) Mol Cell Biol; 19(6): 4079-4092.  
Hauck CR, et al. (1999) Infect Immun; 67(10): 5490-5494.



Western blot analysis of extracts from Raw264.7 cells using SHP-1 (Ab-536) antibody (AP21318).

**For Research Use Only**

Contact & Ordering Information: Angio-Proteomie, 11 Park Drive, Suite 12, Boston, MA 02215, USA. Fax: (480) 247-4337, [angioproteomie@gmail.com](mailto:angioproteomie@gmail.com)