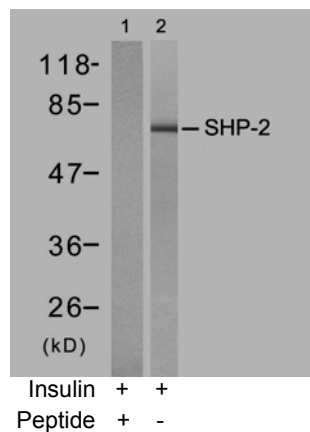




11 Park Drive, Suite 12
Boston, MA 02215

Rabbit anti SHP-2 (Ab-580)

- Catalog Number:** AP21320
Amount: 100µl (For 10 Western Blotting)
Swiss-Prot No. : Q06124
Form of Antibody: Rabbit IgG in phosphate buffered saline (without Mg²⁺ and Ca²⁺), pH 7.4, 150mM NaCl, 0.02% sodium azide and 50% glycerol.
Storage/Stability: Store at -20°C/1 year
Immunogen: The antiserum was produced against synthesized non-phosphopeptide derived from human SHP-2 around the phosphorylation site of tyrosine 580 (R-V-Y^P-E-N).
Purification: The antibody was affinity-purified from rabbit antiserum by affinity-chromatography using epitope-specific immunogen.
Specificity/Sensitivity: SHP-2 (Ab-580) antibody detects endogenous levels of total SHP-2 protein.
Reactivity: Human, Mouse, Rat
Applications: WB: 1:1000
References: Ferjoux G, et al. (2003) Mol Biol Cell. 2003 ; 14(9): 3911-3928.
Shi ZQ, et al. (2000) Mol Cell Biol ; 20(5): 1526-1536.
Li C, Friedman JM. (1999) Proc Natl Acad Sci U S A ; 96(17): 9677-9682
Mañes S, et al. (1999) Mol Cell Biol ; 19(4): 3125-3135.
Oh ES, et al. (1999) Mol Cell Biol; 19(4): 3205-3215.



Western blot analysis of extracts from NIH/3T3 cells treated with insulin (100nM, 15min), using SHP-2 (Ab-580) antibody (AP21320, Lane 1 and 2).

For Research Use Only

Contact & Ordering Information: Angio-Proteomie, 11 Park Drive, Suite 12, Boston, MA 02215, USA. Fax: (480) 247-4337, angioproteomie@gmail.com