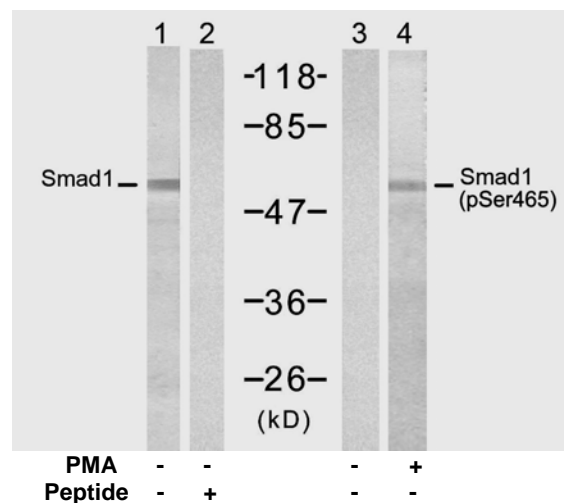


## Rabbit anti Smad1 (Ab-465)

- Catalog Number:** AP21321  
**Amount:** 100µl (for 10 Western Blotting)  
**Swiss-Prot No. :** Q15797  
**Form of Antibody:** Rabbit IgG in phosphate buffered saline (without Mg<sup>2+</sup> and Ca<sup>2+</sup>), pH 7.4, 150mM NaCl, 0.02% sodium azide and 50% glycerol.  
**Storage/Stability:** Store at -20°C/1 year  
**Immunogen:** The antiserum was produced against synthesized non-phosphopeptide derived from human Smad1 around the phosphorylation site of serine 465 (I-S-S-V-S<sup>P</sup>).  
**Purification:** The antibody was affinity-purified from rabbit antiserum by affinity-chromatography using epitope-specific immunogen.  
**Specificity/Sensitivity:** Smad1 (Ab-465) antibody detects endogenous levels of total Smad1 protein.  
**Reactivity:** Human, Mouse, Rat  
**Applications:** WB: 1:1000  
**References:** Hiroaki Seto, et al. (2004) J Clin Invest. March 1; 113(5): 718–726  
 Linyu Li, et al. (2004) Mol Cell Biol. January; 24(2): 856–864.  
 Claire Nourry, et al. (2004) BMC Cell Biol. 5: 20



Western blot analysis of extract from 293 cells, untreated or treated with PMA (200nM, 30min), using Smad1 (Ab-465) Antibody (AP21321, Lane 1 and 2) and Smad1 (Phospho-Ser465) Antibody (pAP11321, Lane 3 and 4).

**For Research Use Only**

Contact & Ordering Information: Angio-Proteomie, 11 Park Drive, Suite 12, Boston, MA 02215, USA. Fax: (480) 247-4337, [angioproteomie@gmail.com](mailto:angioproteomie@gmail.com)