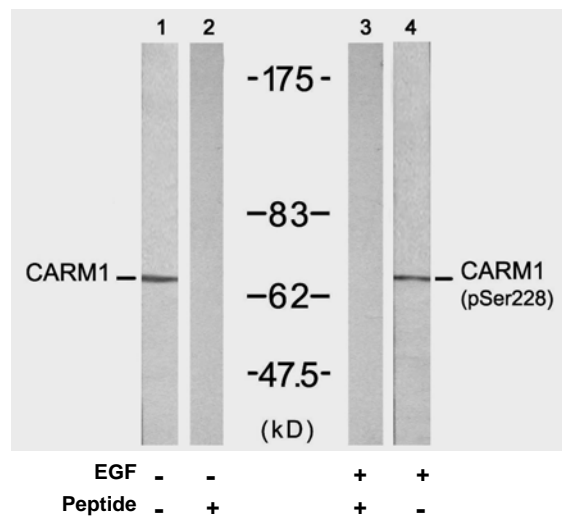


Rabbit anti CARM1 (AB-228) Antibody

- Catalog Number:** AP21331
Amount: 100µl (for 10 Western Blotting)
Swiss-Prot No. : Q86X55
Form of Antibody: Rabbit IgG in phosphate buffered saline (without Mg²⁺ and Ca²⁺), pH 7.4, 150mM NaCl, 0.02% sodium azide and 50% glycerol.
Storage/Stability: Store at -20°C/1 year
Immunogen: The antiserum was produced against synthesized non-phosphopeptide derived from human CARM1 around the phosphorylation site of serine 228 (V-K-S^P-N-N).
Purification: The antibody was affinity-purified from rabbit antiserum by affinity-chromatography using epitope-specific immunogen.
Specificity/Sensitivity: CARM1 (Ab-228) antibody detects endogenous levels of total CARM1 protein.
Reactivity: Human, Mouse, Rat
Applications: WB: 1:1000
References: Selma El Messaoudi, et al. (2006) Proc Natl Acad Sci U S A; 103(36): 13351–13356.
 Marcela Covic, et al. (2005) EMBO J; 24(1): 85–96.
 Eleni Zika, et al. (2005) Proc Natl Acad Sci U S A.; 102(45): 16321–16326
 Neelu Yadav, et al. (2003) Proc Natl Acad Sci U S A; 100(11): 6464–6468



Western blot analysis of extracts from A431 cells untreated or treated with EGF (200ng/ml, 5min), using CARM1 (Ab-228) antibody (pAP21331, Line 1 and 2) and CARM1 (Phospho-Ser228) antibody (pAP11331, Line 3 and 4).

For Research Use Only

Contact & Ordering Information: Angio-Proteomie, 11 Park Drive, Suite 12, Boston, MA 02215, USA. Fax: (480) 247-4337, angioproteomie@gmail.com