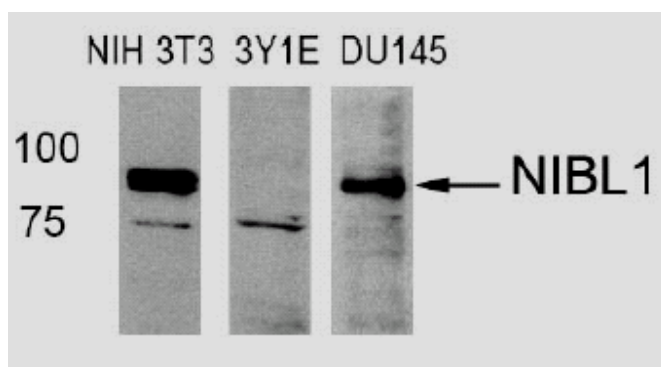


Rabbit anti Niban like protein 1 (Ab-712)

- Catalog Number:** AP21332
Amount: 100µl (For 10 Western Blotting)
Form of Antibody: Rabbit IgG in phosphate buffered saline (without Mg^{2+} and Ca^{2+}), pH 7.4, 150mM NaCl, 0.02% sodium azide and 50% glycerol.
Storage/Stability: Store at -20°C/1 year
Immunogen: The antiserum was produced against synthesized non-phosphopeptide derived from human niban like protein 1 around the phosphorylation site of serine 712 (Q-V-S-SP-P).
Purification: The antibody was affinity-purified from rabbit antiserum by affinity-chromatography using epitope-specific immunogen.
Specificity/Sensitivity: Niban like protein 1(Ab-712) antibody detects endogenous levels of total niban like protein 1.
Reactivity: Human, Mouse
Applications: WB: 1:1000
Swiss-Prot No. : Q96TA1
References: Adachi H, Majima S, et al. Oncogene. 2004 Apr 22;23(19):3495-500
Matsumoto F, Fujii H, et al. Hum Pathol. 2006 Dec; 37(12):1592-600.



Western blot analysis of extract from NIH3T3 (Mouse), 3Y1E (Rat), DU145 (Human) cells using Niban like protein 1(Ab-712) antibody (AP21332).

For Research Use Only

Contact & Ordering Information: Angio-Proteomie, 11 Park Drive, Suite 12, Boston, MA 02215, USA. Fax: (480) 247-4337, angioproteomie@gmail.com