

AccuLadder™ Protein Size Marker (Broad)

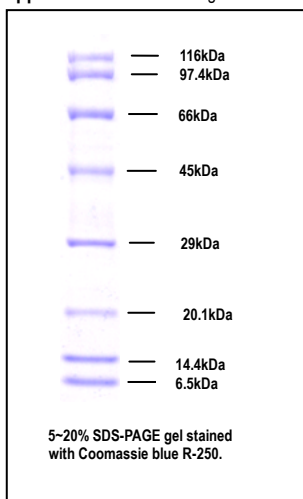
Protein Molecular Weight Markers

- **Description** : AccuLadder™ Protein size marker (Broad) consist of 8 kinds of proteins (6.5kDa ~ 116kDa). This Protein size marker contains sample buffer, and it can be loading directly after heating at 95 °C for 5 minutes. 5 μ l of marker is loaded per lane of SDS-PAGE minigel. In this case, this marker is loaded for 100 lanes.

[Cat. No.]
D-2010

- **Application** : Molecular weight confirmation of proteins.

[Volume]
500 μ l



- **Features**

- Concentration : 0.1mg/mL ~ 0.2mg/mL
- Recommended Loading :
5 μ l /lane (Minigel ; 10x8(cm²), 0.75 or 1.0mm thick)
- Range (kDa) : 6.5~116(kDa)
- Number of Bands: 8

- **Storage Condition**

- Store at -20 °C
- The Protein marker must be aliquot in several tube.

- **Components**

Protein	MW (kDa)	Source
β -Galactosidase	116	E.coli
Phosphorylase b	97.4	Rabbit muscle
Albumin	66	Bovine serum
Ovalbumin	45	Chicken egg white
Carbonic anhydrase	29	Bovine erythrocytes
Trypsin inhibitor	20.1	Soybean
Lysozyme	14.4	Chicken egg white
Aprotinin	6.5	Bovine lung

- **Quality control assay** : SDS-Polyacrylamide gel analysis shows that 8 bands are clearly distinguishable.

- **Note**

- The Protein marker can be applied onto a SDS-PAGE gel.
- Do heat before loading (95 °C , 5min).
- Repeated freezing and thawing should be avoided.

Note

For research use only. Not for use in diagnostic or therapeutic procedures.

Bioneer shall not in any event be liable for incidental or special damage of any kind resulting from any use except on application(s).

- **Application**

1. After completely thawing the AccuLadder™ Protein Size Marker (Broad), heat at 95 °C for 5 minutes.
2. Load 5 μ l per lane of SDS-PAGE minigel, and load samples.
3. Run 5~20% SDS-polyacrylamide gel electrophoresis.
4. Perform staining with coomassie blue R-250.
(If the concentration of gel is different, the pattern of bands will be unlike.)

- **Ordering Information**

[Related BIONEER Protein Molecular Weight Marker Products]

Cat. No.	Products
D-2010	AccuLadder™ Protein Size Marker (Broad), 500 μ l
D-2020	AccuLadder™ Protein Size Marker (Low), 500 μ l