



RayBiotech, Inc.

3607 Parkway Lane suite 200
Norcross, GA 30092
Tel: 770-729-2992, 1-888-494-8555
Fax: 770-206-2393
Website: www.raybiotech.com
Email: info@raybiotech.com

Certificate of Analysis and Data Sheet

Goat Anti-Rat Arginase, Type 1 / arg1

With HRP-conjugated Secondary Antibody

Catalog No.

ER-14-0169

Accession Number

NP_058830.2

Target Protein

Principal Names: arginase 1 liver, AI type I arginase, arginase 1, Arg1

Official Symbol: Arg1

Accession Number(s): NP_058830.2

Non-Human GeneID(s): 11846 (mouse), 29221 (rat)

Immunogen

Peptide with sequence C-NHKPETDYLKPPK, from the C Terminus of the protein sequence according to NP_058830.2.

Purification and Storage

Purified from goat serum by ammonium sulphate precipitation followed by antigen affinity chromatography using the immunizing peptide.

Supplied at 0.5 mg/ml in Tris saline, 0.02% sodium azide, pH7.3 with 0.5% bovine serum albumin.

Aliquot and store at -20°C. Minimize freezing and thawing.

Applications Tested

Peptide ELISA: antibody detection limit dilution 1:32000.

Western blot: Approx 38kDa band observed in Mouse Liver and Rat Liver lysates (calculated MW of 35.0kDa according to NP_058830.1). Recommended concentration: 0.03-0.3µg/ml.

Species Reactivity

Tested: Mouse, Rat

Expected from sequence similarity: Mouse, Rat

Specific References

This antibody has been successfully used in the following papers:

Sherman H, Gutman R, Chapnik N, Meylan J, le Coutre J, Froy O.

All-trans retinoic acid modifies the expression of clock and disease marker genes.

J Nutr Biochem. 2011 Apr 14.

PMID: 21497500

**The products are furnished for LABORATORY RESEARCH USE ONLY.
Not for diagnostic or therapeutic use.**



RayBiotech, Inc.

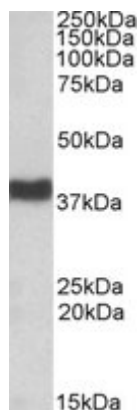
3607 Parkway Lane suite 200
Norcross, GA 30092
Tel: 770-729-2992, 1-888-494-8555
Fax: 770-206-2393
Website: www.raybiotech.com
Email: info@raybiotech.com

Sherman H, Gutman R, Chapnik N, Meylan J, le Coutre J, Froy O.
Caffeine alters circadian rhythms and expression of disease and metabolic markers.
Int J Biochem Cell Biol. 2011 May;43(5):829-38.
PMID: 21352949

Secondary Antibody Applications

Immunoassay (ELISA, Western blotting): 1:5,000-1:10,000

Image



ER-14-0169 (0.1µg/ml) staining of Mouse Liver lysate (35µg protein in RIPA buffer).
Primary incubation was 1 hour. Detected by chemiluminescence.

**The products are furnished for LABORATORY RESEARCH USE ONLY.
Not for diagnostic or therapeutic use.**