



RayBiotech, Inc.

3607 Parkway Lane suite 200
Norcross, GA 30092
Tel: 770-729-2992, 1-888-494-8555
Fax: 770-206-2393
Website: www.raybiotech.com
Email: info@raybiotech.com

Certificate of Analysis and Data Sheet

Goat Anti-Argininosuccinate synthetase 1

With HRP-conjugated Secondary Antibody

Catalog No.
ER-14-0170

Accession Number
NP_000041.2 ; NP_446464.1

Target Protein

Principal Names: citrulline--aspartate ligase, CTLN1, ASS1, ASS, Argininosuccinate synthetase 1

Official Symbol: ASS1

Accession Number(s): NP_000041.2 ; NP_446464.1

Human GeneID(s): [445](#)

Non-Human GeneID(s): 11898 (mouse), 25698 (rat)

Important Comments: The variants represent identical protein (NP_000041.2 and NP_446464.1).

Immunogen

Peptide with sequence C-ENPKNQAPPGLYTKTQD, from the internal region of the protein sequence according to NP_000041.2 ; NP_446464.1.

Purification and Storage

Purified from goat serum by ammonium sulphate precipitation followed by antigen affinity chromatography using the immunizing peptide.

Supplied at 0.5 mg/ml in Tris saline, 0.02% sodium azide, pH7.3 with 0.5% bovine serum albumin. Aliquot and store at -20°C. Minimize freezing and thawing.

Applications Tested

Peptide ELISA: antibody detection limit dilution 1:64000.

Western blot: Approx 45kDa band observed in Human Kidney lysates (calculated MW of 46.5kDa according to NP_000041.2 and NP_446464.1). Recommended concentration: 0.01-0.03µg/ml.

IHC: In paraffin embedded Human Kidney shows textured cytoplasm staining in PCT. Recommended concentration, 2-4µg/ml.

Immunofluorescence: A customer has reported this antibody works well in IF.

Immunoprecipitation: This antibody has been successfully used in IP from BAEC cells as described in the following paper: Corbin et al, Biochem Biophys Res Commun. 2008 Dec 26;377(4):1042-6, PMID: 18948083.

Species Reactivity

Tested: Human, Cow

Expected from sequence similarity: Human, Mouse, Rat, Dog

**The products are furnished for LABORATORY RESEARCH USE ONLY.
Not for diagnostic or therapeutic use.**



RayBiotech, Inc.

3607 Parkway Lane suite 200
Norcross, GA 30092
Tel: 770-729-2992, 1-888-494-8555
Fax: 770-206-2393
Website: www.raybiotech.com
Email: info@raybiotech.com

Specific Reference

This antibody has been successfully used in the following papers:

Corbin KD, Pendleton LC, Solomonson LP, Eichler DC.

Phosphorylation of argininosuccinate synthase by protein kinase A.

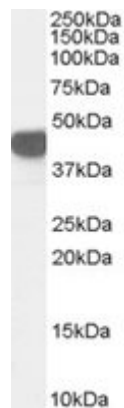
Biochem Biophys Res Commun. 2008 Dec 26;377(4):1042-6.

PMID: 18948083

Secondary Antibody Applications

Immunoassay (ELISA, Western blotting): 1:5,000-1:10,000

Image



ER-14-0170 (0.1 μ g/ml) (0.03 μ g/ml) staining of Human Kidney lysate (35 μ g protein in RIPA buffer).
Primary incubation was 1 hour. Detected by chemiluminescence.

**The products are furnished for LABORATORY RESEARCH USE ONLY.
Not for diagnostic or therapeutic use.**