



RayBiotech, Inc.

3607 Parkway Lane suite 200
Norcross, GA 30092
Tel: 770-729-2992, 1-888-494-8555
Fax: 770-206-2393
Website: www.raybiotech.com
Email: info@raybiotech.com

Certificate of Analysis and Data Sheet

Goat Anti-CGI58 / ABHD5

With HRP-conjugated Secondary Antibody

Catalog No.

ER-14-0320

Accession Number

NP_057090.2

Target Protein

Principal Names: NCIE2, MGC8731, IECN2, CDS, bhydrolase domain containing 5, aCGI58, CGI58 protein, ABHD5

Official Symbol: ABHD5

Accession Number(s): NP_057090.2

Human GeneID(s): 51099

Non-Human GeneID(s): 67469 (mouse), 316122 (rat)

Important Comments: This antibody is not expected to cross-react with ABHD4.

Immunogen

Peptide with sequence C-FPERPDLADQDR, from the internal region of the protein sequence according to NP_057090.2.

Purification and Storage

Purified from goat serum by ammonium sulphate precipitation followed by antigen affinity chromatography using the immunizing peptide.

Supplied at 0.5 mg/ml in Tris saline, 0.02% sodium azide, pH7.3 with 0.5% bovine serum albumin.

Aliquot and store at -20°C. Minimize freezing and thawing.

Applications Tested

Peptide ELISA: antibody detection limit dilution 1:16000.

Western blot: Approx 40kDa band observed in lysates of cell lines NIH3T3 and A431 (calculated MW of 39.1kDa according to NP_057090.2). Recommended concentration: 0.2-0.6 µg/ml. Additional faint bands of 26kDa and 18kDa were observed. These bands were successfully blocked by incubation with the immunizing peptide. We would appreciate any feedback from people in the field - have any such results been reported with other antibodies/lysates? Have any further splice variants/modified forms been reported?

Species Reactivity

Tested: Human, Mouse, Cow

Expected from sequence similarity: Human, Mouse, Rat, Dog

**The products are furnished for LABORATORY RESEARCH USE ONLY.
Not for diagnostic or therapeutic use.**



RayBiotech, Inc.

3607 Parkway Lane suite 200
Norcross, GA 30092
Tel: 770-729-2992, 1-888-494-8555
Fax: 770-206-2393
Website: www.raybiotech.com
Email: info@raybiotech.com

Specific Reference

This antibody has been successfully used in the following papers:

Koltes DA, Spurlock DM.

Coordination of lipid droplet-associated proteins during the transition period of Holstein dairy cows.

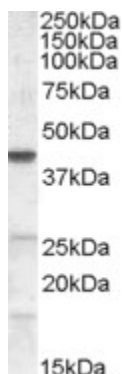
J Dairy Sci. 2011 Apr;94(4):1839-48.

PMID: 21426973

Secondary Antibody Applications

Immunoassay (ELISA, Western blotting): 1:5,000-1:10,000

Image



ER-14-0320 (0.2 μ g/ml) staining of NIH3T3 lysate (35 μ g protein in RIPA buffer).
Primary incubation was 1 hour. Detected by chemiluminescence.

**The products are furnished for LABORATORY RESEARCH USE ONLY.
Not for diagnostic or therapeutic use.**