



## RayBiotech, Inc.

3607 Parkway Lane suite 200  
Norcross, GA 30092  
Tel: 770-729-2992, 1-888-494-8555  
Fax: 770-206-2393  
Website: [www.raybiotech.com](http://www.raybiotech.com)  
Email: [info@raybiotech.com](mailto:info@raybiotech.com)

### Certificate of Analysis and Data Sheet

## Mouse Anti-Human TFAP2C With HRP-conjugated secondary anti-mouse

**Catalog No.**

JI-04-00137

**Species:**

Human

**Isotype:**

Mouse IgG1

**Accession No.**

NM\_003222

### Synonyms:

transcription factor AP-2 gamma (activating enhancer binding protein 2 gamma) (TFAP2C)

### Preparation

Immunogen was recombinant protein derived from human TFAP2C. This antibody was produced from a hybridoma resulting from the fusion of a mouse myeloma with B cells obtained from a mouse immunized with the immunogen. The IgG fraction of tissue culture supernatant was purified by Protein G affinity chromatography.

### Applications

Table Summary of antibody applications and working conditions

Options Functions	YES	NO	Not determined	Work dilution or positive sample
ELISA	•			
Western Blotting(WB)	•			
Immunohistochemistry(IHC)			•	
Immunocytochemistry (ICC)			•	
Immunoprecipitation(IP)			•	
Flow Cytometry(FACS)			•	
Immunofluorescence staining(IF)			•	
Neutralization			•	

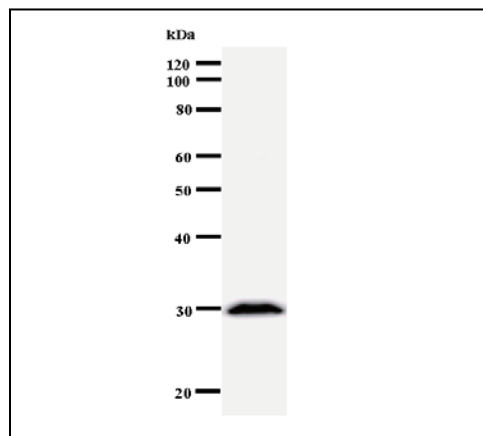
Note: Other applications are not tested yet. Optimal dilutions should be determined by each laboratory for each application.

**The products are furnished for LABORATORY RESEARCH USE ONLY.  
Not for diagnostic or therapeutic use.**

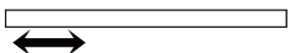


## RayBiotech, Inc.

3607 Parkway Lane suite 200  
Norcross, GA 30092  
Tel: 770-729-2992, 1-888-494-8555  
Fax: 770-206-2393  
Website: [www.raybiotech.com](http://www.raybiotech.com)  
Email: [info@raybiotech.com](mailto:info@raybiotech.com)



Western blot analysis of immunized recombinant protein, using anti- TFAP2C monoclonal antibody.

N  C

Arrow indicates the region of immunized recombinant protein carrying 50-200 amino acids.

## Secondary Antibody Applications

Options Functions	YES	NO	Not determined	Recommended Work dilution or concentration
Immunoassay (ELISA, Western blot)	.			1:5000-1:10000

## Reconstitution

Supplied as 100 µg of purified antibody. It is reconstituted with 1ml of sterile PBS containing 1% BSA and 0.05% sodium azide. Its final concentration is 100µg/ml. **Please avoid freeze-thaw cycles.**

## Storage

Store at -20<sup>0</sup>C, if not intended for use within a month. Keep it at 4<sup>0</sup>C and minimize freezing and thawing when use. **Please avoid freeze-thaw cycles.**

**The products are furnished for LABORATORY RESEARCH USE ONLY.  
Not for diagnostic or therapeutic use.**