



RayBiotech, Inc.

3607 Parkway Lane suite 200
Norcross, GA 30092
Tel: 770-729-2992, 1-888-494-8555
Fax: 770-206-2393
Website: www.raybiotech.com
Email: info@raybiotech.com

Certificate of Analysis and Data Sheet

Mouse Anti-Human POU2F1 With HRP-conjugated secondary anti-mouse

Catalog No.

JI-04-00155

Species:

Human

Isotype:

Mouse IgG1

Accession No.

BC052274

Synonyms:

POU domain, class 2, transcription factor 1

Preparation

Immunogen was recombinant protein derived from human POU2F1. This antibody was produced from a hybridoma resulting from the fusion of a mouse myeloma with B cells obtained from a mouse immunized with the immunogen. The IgG fraction of tissue culture supernatant was purified by Protein G affinity chromatography.

Applications

Table Summary of antibody applications and working conditions

Options Functions	YES	NO	Not determined	Work dilution or positive sample
ELISA	•			
Western Blotting(WB)	•			HEK293 whole cell lysate
Immunohistochemistry(IHC)			•	
Immunocytochemistry (ICC)	•			HeLa Cell
Immunoprecipitation(IP)			•	
Flow Cytometry(FACS)			•	
Immunofluorescence staining(IF)			•	
Neutralization			•	

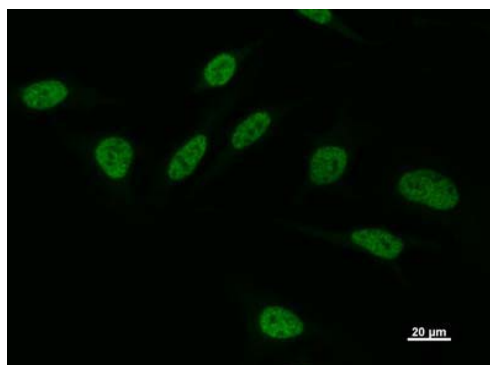
Note: Other applications are not tested yet. Optimal dilutions should be determined by each laboratory for each application.

**The products are furnished for LABORATORY RESEARCH USE ONLY.
Not for diagnostic or therapeutic use.**

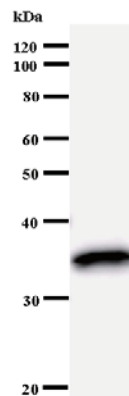


RayBiotech, Inc.

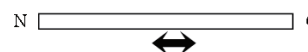
3607 Parkway Lane suite 200
Norcross, GA 30092
Tel: 770-729-2992, 1-888-494-8555
Fax: 770-206-2393
Website: www.raybiotech.com
Email: info@raybiotech.com



Immunocytochemistry



Western blot analysis of immunized recombinant protein, using anti-POU2F1 monoclonal antibody.



Arrow indicates the region of immunized recombinant protein carrying 50-200 amino acids.

Secondary Antibody Applications

Options Functions	YES	NO	Not determined	Recommended Work dilution or concentration
Immunoassay (ELISA, Western blot)	•			1:5000-1:10000

Reconstitution

Supplied as 100 μg of purified antibody. It is reconstituted with 1ml of sterile PBS containing 1% BSA and 0.05% sodium azide. Its final concentration is 100 μg/ml. **Please avoid freeze-thaw cycles.**

Storage

Store at -20°C, if not intended for use within a month. Keep it at 4°C and minimize freezing and thawing when use. **Please avoid freeze-thaw cycles.**

**The products are furnished for LABORATORY RESEARCH USE ONLY.
Not for diagnostic or therapeutic use.**