

Catalog No. LF-MA0108

MONOCLONAL ANTIBODY



Anti-Fibrinogen (5C5)

Background : Fibrinogen is a soluble glycoprotein found in the plasma, with a molecular weight of 340kDa. It comprises of three pairs of non-identical polypeptide chains (alpha, 63.5kDa beta, 56kDa, and gamma, 47kDa chains) linked to each other by disulphide bonds. Low plasma fibrinogen concentrations are therefore associated with an increased risk of bleeding due to impaired primary and secondary hemostasis. Therefore Fibrinogen is an essential component of the blood coagulation system. Also it may play key roles in the process of atherosclerotic lesion formation, with subsequent effects on cardiovascular diseases. And increasing evidence from epidemiological studies suggests that elevated plasma fibrinogen levels are associated with an increased risk of ischaemic heart disease(IHD), stroke and other thromboembolism.

Immunogen : Fibrinogen protein purified from Human plasma

Host : Mouse

Isotype : IgG1, k

Clone number : 5C5

Composition : PBS containing 50% glycerol

Positive control : human plasma

Storage : Store for 1 year at -20°C from date of shipment

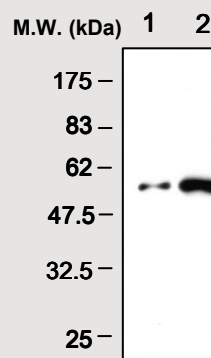
Size : 100 µl

Species cross reactivity

Human
+

Mouse
NT

Rat
NT



IMMUNOBLOT ANALYSIS of human plasma protein :
Lane 1: Purified human Fibrinogen protein
Lane 2: human plasma

Applications :

ELISA

WesternBlotting(1:2000)

Immunohistochemistry

Immunoprecipitation is not tested.

Background Reference :

(1) S. kamath et al. (2003) Fibrinogen :
biochemistry, epidemiology and
determinants. *Q J Med* **96**:711-729

FOR RESEARCH PURPOSE ONLY
NOT FOR DIAGNOSTIC OR THERAPEUTIC USE