

Catalog No. LF-MA0109

MONOCLONAL ANTIBODY



Anti-Lactoferrin (1B8)

Background : Lactoferrin(Lf), one of transferrin family, is found in external fluids, including milk and mucosal secretions, and prominent components of the secondary granules of neutrophils. Lf consists of a single polypeptide chain (approximately 80 kDa) folded into two structurally homologous lobes, each of which can reversibly bind one ferric ion (Fe^{3+}). Lf plays a central role in iron metabolism and host defense system against microbial infection.

Immunogen : Recombinant human protein purified from *E.coli*

Host : Mouse

Clone Number : 1B8

Isotype : IgG1, k

Size : 100 μl

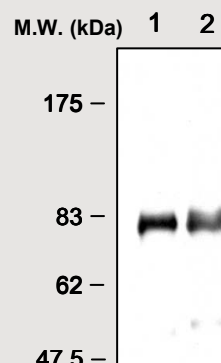
Composition : PBS containing 50% glycerol

Positive control : Human Lactoferrin purified from foremilk

Storage : Store for 1 year at -20°C from date of shipment

Species cross reactivity

Human +	Mouse NT	Rat NT
------------	-------------	-----------



IMMUNOPRECIPITATION ANALYSIS

of Human Lactoferrin:

Lane 1 : Input

Lane 2 : Precipitates

Immunoblot : anti-lactoferrin antibody (#LF-PA0109)

Applications :

Immunoprecipitation (1~2 μl /400 μl cell lysates)

Immunohistochemistry

Background Reference:

- 1) Farnaud, S. and Evans, R.W. (2003) Mol. Immunol. 40, 395-405
- 2) Baker, H.M. et al. (2003) Proc. Natl. Acad. Sci. USA 100, 3579-3583
- 3) Appelmelk, B.J. et al. (1994) Infect. Immun. 62, 2628-2632

FOR RESEARCH PURPOSE ONLY
NOT FOR DIAGNOSTIC OR THERAPEUTIC USE