

Catalog No. LF-MA0151

MONOCLONAL ANTIBODY



Anti-Fibronectin (16E5)

Background : Fibronectin is a high molecular weight glycoprotein containing about 5% carbohydrate that binds to receptor proteins that span the cells membrane, called integrins. In addition to integrins, they also bind extracellular matrix components such as collagen, fibrin and heparin. Fibronectin can be found in the blood plasma in its soluble form which is composed of two 250 kDa subunits joined together by disulfide bonds. Plasma fibronectin is made in the liver by hepatocytes. The insoluble form that serves as a linker in the extracellular matrix is a large complex of cross-linked subunits. Fibronectin is involved in many cellular processes, including tissue repair, embryogenesis, blood clotting, and cell migration/ adhesion, so it can be used as a therapeutic agent for wound healing. It is also one of the few proteins for which production increases with age without any associated pathology.

Immunogen : Protein purified from Human plasma

Host : Mouse

Clone number : 16E5

Isotype : IgG1, k

Size : 100 μ l

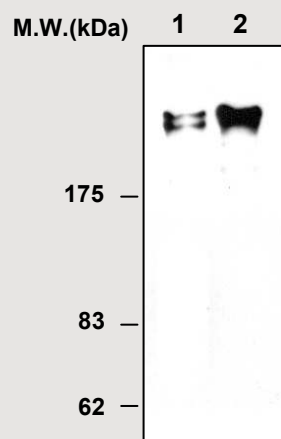
Compositon : PBS containing 50% glycerol

Positive control : Human plasma

Storage : Store for 1 year at -20°C from date of shipment

Species cross reactivity

Human +	Mouse NT	Rat NT
------------	-------------	-----------



Immunoblot Analysis of human plasma

Lane 1 : Fibronectin isolated from human plasma
Lane 2 : Human plasma

Applications :

Western blotting (1:2,000)

Immunoprecipitation (1 μ l for 400 μ l lysate)

Background Reference :

1) Mao, Y. and Schwarzbauer, J. E. (2005) Matrix Biology 24(6) 389-399

2) Carsons, S. E. (1989). Fibronectin in Health and Disease. Florida: CRC Press, Inc

FOR RESEARCH PURPOSE ONLY
NOT FOR DIAGNOSTIC OR THERAPEUTIC USE