

**Catalog No. LF-MA0159**

**MONOCLONAL ANTIBODY**



## Anti-Ceruloplasmin(3B11)

**Background :** Ceruloplasmin, 132kDa, is a serum ferroxidase that contains greater than 95% of the copper found in plasma. This protein is a member of the multicopper oxidase family, an evolutionarily conserved group of proteins that utilize copper to couple substrate oxidation with the four-electron reduction of oxygen to water. Despite the need for copper in ceruloplasmin function, this protein plays no essential role in the transport or metabolism of this metal. Serum ceruloplasmin level is reduced in Wilson's disease, malnutrition nephrotic syndrome and increased in pregnancy, oestrogen containing contraceptives, acute infection, some types of chronic liver disease, malignancy, rheumatoid arthritis.

**Immunogen :** Protein purified from Human plasma

**Host :** Mouse

**Clone number :** 3B11

**Isotype :** IgG1, k

**Size :** 100  $\mu$ l

**Composition :** PBS containing 50% glycerol

**Positive control :** Human plasma

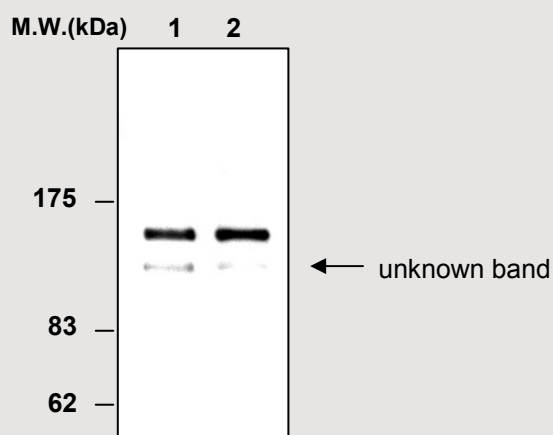
**Storage :** Store for 1 year at  $-20^{\circ}\text{C}$  from date of shipment

### Species cross reactivity

**Human**  
**+**

**Mouse**  
**NT**

**Rat**  
**NT**



**Immunoblot Analysis of human plasma protein**  
Lane 1 : Ceruloplasmin isolated from human plasma  
Lane 2 : Human plasma

### Applications :

ELISA

Western blotting (1:1,000)

Immunoprecipitation (1  $\mu$ l/400  $\mu$ l for lysates)

Immunohistochemistry

### Background Reference :

- 1) Hellman NE, Gitlin JD. Annu Rev Nutr. (2002); vol.22: pp.439-58.
- 2) Loeffler DA et al, Free Radic Res. (2001); vol.35(2): pp.111-8.

FOR RESEARCH PURPOSE ONLY  
NOT FOR DIAGNOSTIC OR THERAPEUTIC USE