

**Catalog No. LF-MA0227**

**MONOCLONAL ANTIBODY**



## Anti- $\alpha$ -1 B Glycoprotein (51A6)

**Background:** Alpha-1-B glycoprotein (A1BG) belongs to the immunoglobulin superfamily. There is insufficient information about its function. The biological function of the human A1BG is still unknown. A1BG consists of one polypeptide chain of 474 amino acids with four glucosamine oligosaccharides. The polypeptide has five intrachain disulfide bonds and comprises five structural domains, each containing about 95 amino acids and one disulfide bond. The human cytein-rich secretory protein 3 (CRISP-3) is a binding partner of A1B, suggesting the A1BG-CRISP-3 complex displays a protecting function from a potentially harmful effect of free CRISP-3 in circulation.

**Immunogen :** Protein purified from Human plasma

**Host :** Mouse

**Clone number :** 51A6

**Isotype :** IgG1, k

**Size :** 100ul

**Applications :**

ELISA

Western Blotting (1:2,000)

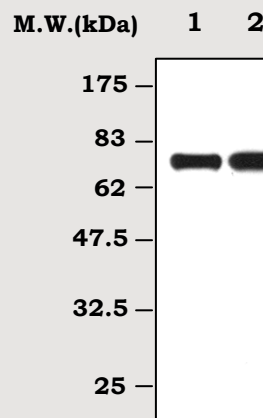
**Composition :** Hepes with 0.15M NaCl, 0.01% BSA, 0.03% sodium azide, and 50% glycerol

**Positive control :** Human plasma

**Storage :** Store for 1 year at -20°C from date of shipment

### Species cross reactivity

Human	Mouse	Rat
+	-	-



**Immunoblot Analysis** of human plasma protein  
Lane 1 :  $\alpha$ 1-B-glycoprotein protein isolated from human plasma  
Lane 2 : Human plasma (0.1ul)

### Background Reference :

- 1) Udby, L. et al., 2004, Biochemistry 43:12877-12886
- 2) Ishioka, N. et al., 1986, Proc Natl Acad Sci U S A. 83:2363-2367

FOR RESEARCH PURPOSE ONLY  
NOT FOR DIAGNOSTIC OR THERAPEUTIC USE