

## Neurosin (GST tagged)

**Background :** Kallikreins(KLKs) belong to the serine protease family of proteolytic enzymes. Neurosin(KLK6), one of these, is a trypsin-like protease dominantly expressed in the human brain but also in a variety of other tissues. As measured by a sensitive quantitative assay in serum and cerebrospinal fluid(CSF), it may have value as a biomarker for diagnosis and monitoring of Alzheimer's disease(AD). It seems to be down regulated in serum and tissues of AD patients and may be involved in amyloid metabolism.

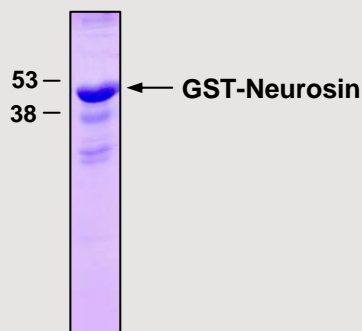
**Source :** Purified from *E.coli* expressing the human Neurosin gene

**Packaging size :** 0.5 mg

**Molecular Weight :** 51.8 kDa

**Concentration :** 1.0 mg/ml

**Storage :** Neurosin is supplied with a vial of storage buffer (20mM HEPES, pH7.0/10% Glycerol). Store at -80°C.



**Background Reference:**

1. Akira O, et. al. *Neurochemistry* **12**(7) 1345 -1350 (2001)
2. George M, et. al. *Clinica Chimica Acta* **329**, 1-8(2003)
3. Georgios P, et. al. *Biochemical and Biophysical Research Communications* **320** (2004) 54-61

FOR RESEARCH PURPOSE ONLY  
NOT FOR DIAGNOSTIC OR THERAPEUTIC USE