

**Catalog No. LF-PA0053**

**POLYCLONAL ANTIBODY**



## Anti-Cyclin D3

**Background :** Cyclin D3, ~34kDa, is a member of cyclin D family that promotes cell cycle progression to the DNA synthesis (S) phase. Cyclins complexed with cyclin-dependent kinases (CDKs) mediate phosphorylation of other proteins relevant to cell proliferation. D-type cyclins and their complexing CDKs phosphorylate the retinoblastoma gene product with influences transcription of growth-controlling genes. Cyclin D3 regulates cell proliferation during hematopoiesis, carcinogenesis, and may have function in the terminally differentiated cells. In recent studies, there is reports that cyclin D3 involves in multiple myeloma and malignant precursor T cells.

**Immunogen :** Synthetic peptide

**Host :** Rabbit

**Type :** Purified

**Isotype :** IgG

**Size :** 100 $\mu$ l

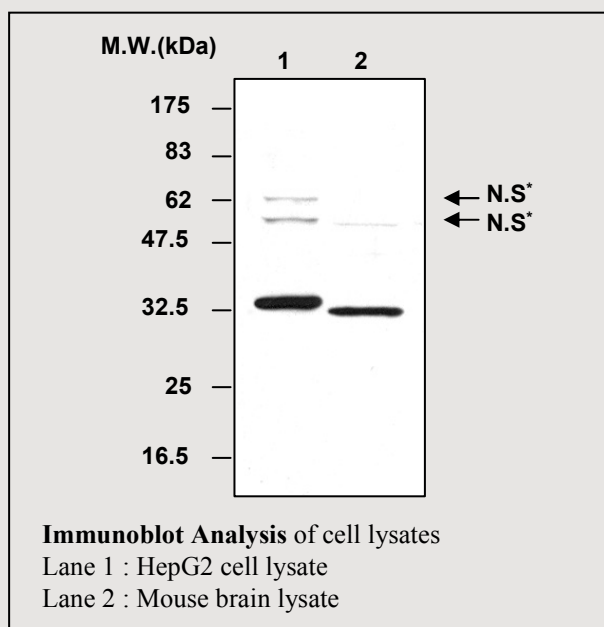
**Composition :** PBS containing 50% glycerol

**Positive control :** HepG2 cell lysate

**Storage :** Store for 1 year at -20°C from date of shipment

### Species cross reactivity

Human +	Mouse +	Rat -
------------	------------	----------



\* N.S : Non-Specific band

### Applications :

Western blotting (1:2,000)

Immunoprecipitation was not tested

### Background Reference :

- 1) Watson DS et al, Oncology. 1999; vol.56(1): pp.66-72.
- 2) Weng AP, Aster JC. Cancer Cell. 2003; vol.4(6): pp.451-61.
- 3) Hideshima T et al, Blood. 2004; vol.104(3): pp.607-18.

FOR RESEARCH PURPOSE ONLY  
NOT FOR DIAGNOSTIC OR THERAPEUTIC USE