

Catalog No. LF-PA0146

POLYCLONAL ANTIBODY



Anti-alpha Tubulin

Background : Tubulin is a heterodimer consisting of alpha and beta-tubulin subunits. It is nearly ubiquitous among eukaryotic cells. The alpha and beta tubulins, which are each about 55 kDa MW, are homologous but not identical. Alpha-beta tubulin heterodimer is the basic building block of microtubules. This intracellular cylindrical filamentous structure is present in almost eukaryotic cells. Microtubules serve as structural supports and lines of transport within the cell, as well as serving a key role in mitosis.

Immunogen : Synthetic peptide (KLH coupled) corresponding to C-terminal residues of Human alpha tubulin.

Host : Rabbit

Size : 100 µl

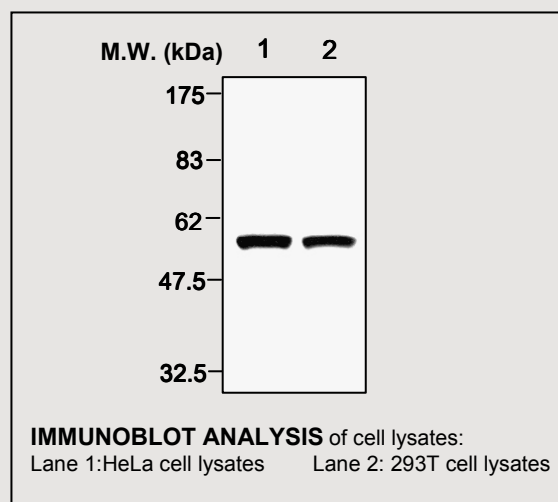
Composition : PBS containing 50% glycerol

Positive control : HeLa cell lysates

Storage : store for 1 year at -20°C from date of shipment

Species cross reactivity

Human	Mouse	Rat
+	+	+



Applications :

Western Blotting (1:10,000)

Background Reference:

1. Blose SH, et. al. Journal of Cell Biology, 1984, 98(3):847-58.
2. Breitling F, et. al. Journal of Molecular Biology, 1986, 189(2):367-70.
3. Biochim Biophys Acta, 1989, 1012(1):46-56.
4. Biochemistry, 1993, 32(18):4955-61

FOR RESEARCH PURPOSE ONLY
NOT FOR DIAGNOSTIC OR THERAPEUTIC USE