

## LF-PA40320 anti-ARFGAP1 (phospho-Tyr782)

**Product Name**

anti-ARFGAP1 (phospho-Tyr782)

**Pack Size**

50 ug

**Description**

Rabbit polyclonal to ARFGAP1 (phospho-Tyr782)

**Immunogen**

Synthetic peptide (Amino acids 777-787 of mouse DDEF1/ASAP1 phosphorylated at Tyr782)

**Clonality**

Polyclonal Antibody

**Host**

Rabbit

**Isotype**

IgG

**Cross Reactivity**

Hu, Ms, Rt, Bv, Chmp, Chk, Dog

**Application**

E (1:4000~1:16000)  
WB (1:500~1:2000)  
IHC-P (20~40 ug/ml)  
IF

**Concentration**

1 mg/ml

**Function**

GTPase-activating protein (GAP) for the ADP ribosylation factor 1 (ARF1). Involved in membrane trafficking and/or vesicle transport. Promotes hydrolysis of the ARF1-bound GTP and thus, is required for the dissociation of coat proteins from Golgi-derived membranes and vesicles, a prerequisite for vesicle's fusion with target compartment. Probably regulates ARF1-mediated transport via its interaction with the KDEL proteins and RNP24. Overexpression induces the redistribution of the entire Golgi complex to the endoplasmic reticulum, as when ARF1 is deactivated. Its activity is stimulated by phosphoinositides and inhibited by phosphatidylcholine

**Cellular Location**

Cytoplasm Golgi apparatus

**Database Link**

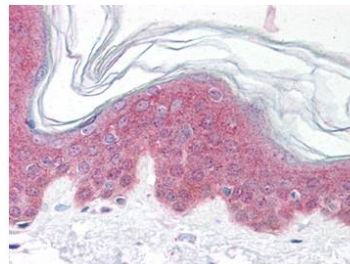
SwissProt : [Q8N6T3](#)

**Composition**

0.02 M Potassium Phosphate, 0.15 M Sodium Chloride, pH 7.2 with 0.01% Sodium Azide

**Storage**

+4°C or -20°C, Avoid repeated freezing and thawing.

**Image**


**IMMUNOHISTOCHEMICAL ANALYSIS of skin  
(Formalin-Fixed Paraffin-Embedded)**

