

Interleukin-6 Human E. coli

Product Data Sheet

Type: Recombinant

Source: E. coli

Species: Human

Other names: IL-6, Interferon-beta 2, B-cell stimulatory factor 2, HGF

Cat. No.:

RD172015100 (0.1 mg)

Description

Total 193 AA. MW: 22.05 kDa (calculated). N-Terminal His-tag, 10 extra AA (highlighted).

Introduction to the Molecule

Interleukin-6 is a multi-functional cytokine that regulates immune responses, acute phase reactions and hematopoiesis. It also plays a vital part in host defense mechanisms. IL-6 is usually not produced constitutively by normal cells, but its expression is readily induced by a variety of cytokines, lipopolysaccharide or viral infections.

Research topic

Cytokines and chemokines and related molecules, Energy metabolism and body weight regulation

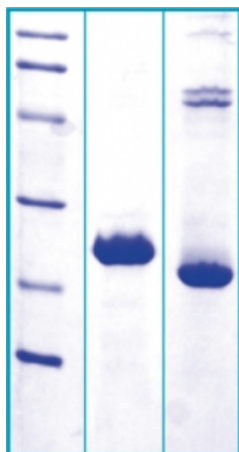
Amino Acid Sequence

MKHHHHHHAS VPPGEDSKDV AAPHRQPLTS SERIDKQIRY ILDGISALRK ETCNKSNMCE SSKEALAENN LNLPKMAEKD
GCFQSGFNEE TCLVKIITGL LEFEVYLEYL QNRFESSEEQ ARAVQMSTKV LIQFLQKKAK NLDAITTPDP TTNASLLTKL
QAQNQWLQDM TTHLILRSFK EFLQSSLRAL RQM

Source

E. coli

SDS-PAGE gel



14% SDS-PAGE separation of Human Interleukin-6

1. M.W. marker - 14, 21, 31, 45, 66, 97 kDa
2. reduced and heated sample, 5µg/lane
3. non-reduced and non-heated sample, 5µg/lane

Formulation

Filtered (0,4 µm) and lyophilized in 0.5 mg/mL in 20mM TRIS, 50mM NaCl, pH 7.5

Reconstitution

Add deionized water to prepare a working stock solution of approximately 0.5 mg/mL and let the lyophilized pellet dissolve completely. Product is not sterile! Please filter the product by an appropriate sterile filter before using it in the cell culture.

Shipping

At ambient temperature. Upon receipt, store the product at the temperature recommended below.

Storage, Stability/Shelf Life

Store lyophilized protein at -20°C. Lyophilized protein remains stable until the expiry date when stored at -20°C. Aliquot reconstituted protein to avoid repeated freezing/thawing cycles and store at -80°C for long term storage. Reconstituted protein can be stored at 4°C for a limited period of time; it does not show any change after one week at 4°C.

Quality Control Test

BCA to determine quantity of the protein.

SDS PAGE to determine purity of the protein.

Applications

Western blotting