



Adiponectin HMW-rich Human HEK293, Tag free

Product Data Sheet

Type: Recombinant

Source: HEK293

Species: Human

Cat. No.:

RD172023100-C (0.1 mg)

Other names: Adipocyte C1q and collagen domain-containing protein, Adipocyte complement-related 30 kDa protein, ACRP30, Adipose most abundant gene transcript 1 protein, apM-1, Gelatin-binding protein, ADIPOQ, ACDC, APM1, GBP28

Introduction to the Molecule

Adiponectin, also referred to as Acrp30, AdipoQ and GBP-28, is a recently discovered 244 amino acid protein, the product of the *apM1* gene, which is physiologically active and specifically and highly expressed in adipose cells. The protein belongs to the soluble defence collagen superfamily; it has a collagen-like domain structurally homologous with collagen VIII and X and complement factor C1q-like globular domain. Adiponectin forms homotrimers, which are the building blocks for higher order complexes found circulating in serum. Together, these complexes make up approximately 0.01% of total serum protein. Adiponectin receptors AdipoR1 and AdipoR2 have been recently cloned; AdipoR1 is abundantly expressed in skeletal muscle, whereas AdipoR2 is predominantly expressed in the liver. Paradoxically, adipose tissue-expressed adiponectin levels are inversely related to the degree of adiposity. Adiponectin concentrations correlate negatively with glucose, insulin, triglyceride concentrations, liver fat content and body mass index and positively with high-density lipoprotein-cholesterol levels, hepatic insulin sensitivity and insulin-stimulated glucose disposal. Adiponectin has been shown to increase insulin sensitivity and decrease plasma glucose by increasing tissue fat oxidation. Of particular interest is that low adiponectin serum levels predict type 2 diabetes independent of other risk factors. Adiponectin also inhibits the inflammatory processes of atherosclerosis suppressing the expression of adhesion and cytokine molecules in vascular endothelial cells and macrophages, respectively. This adipokine plays a role as a scaffold of newly formed collagen in myocardial remodelling after ischaemic injury and also stimulates angiogenesis by promoting cross-talk between AMP-activated protein kinase and Akt signalling in endothelial cells. Low serum adiponectin levels are found in patients with coronary artery disease. Moreover, high circulating levels of adiponectin are associated with decreased risk of myocardial infarction, independent of other factors. Altogether, adiponectin has the potential to become a clinically relevant parameter to be measured routinely in subjects at risk for type 2 diabetes, atherosclerosis and the metabolic syndrome.

Research topic

Cardiovascular disease, Diabetology - Other Relevant Products, Energy metabolism and body weight regulation

Amino Acid Sequence

ETTTQGPGLV LPLPKGACTG WMAGIPGHPG HNGAPGRDGR DGTPGEKGEK GDPGLIGPKG DIGETGVPGA EGPRGFPGIQ
GRKGEPGEA YVYRSAFSVG LETYVTIPNM PIRFTKIFYN QQNHYDGSTG KFHCNIPGLY YFAYHITVYM KDVKVSFLFKK
DKAMLFTYDQ YQENNVDQAS GSVLLHLEVG DQVWLQVYGE GERNGLYADN DNDSTFTGFL LYHDTN

Glu 1 to Gln 5 were confirmed by N-terminal sequencing.

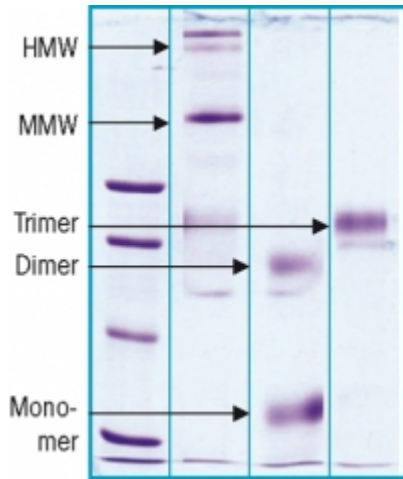
Source

HEK293

Purity

>90%

SDS-PAGE gel



Biological Activity

Effect of this product on PDGF-induced proliferation of human aortic smooth muscle cells was confirmed experimentally.

Endotoxin

<1.0 EU/ug

Formulation

Filtered (0,4 µm) and lyophilized in 20 mM Tris, 50 mM NaCl, pH 7.5 and 1mM CaCl₂ at 0.5 mg/mL concentration.

Reconstitution

Add deionized water to prepare a working stock solution of approximately 0.5 mg/mL and let the lyophilized pellet dissolve completely. Product is not sterile! Please filter the product by an appropriate sterile filter before using it in the cell culture.

Shipping

At ambient temperature. Upon receipt, store the product at the temperature recommended below.

Storage, Stability/Shelf Life

Store lyophilized protein at -80°C. Lyophilized protein remains stable until the expiry date when stored at -80°C. Aliquot reconstituted protein to avoid repeated freezing/thawing cycles and store at -80°C for long term storage. Reconstituted protein can be stored at 4°C for a week.

Quality Control Test

BCA to determine quantity of the protein.

SDS PAGE to determine purity of the protein.

LAL to determine quantity of endotoxin.

GFC to determine purity of the protein.

Applications

Cell culture and/or animal studies, ELISA, Western blotting

Note

