



Lipoprotein Lipase Human HEK293

Product Data Sheet

Type: Recombinant
Source: HEK293
Species: Human
Other names: LPL, LIPD

Cat. No.:
RD172131100- (0.1 mg)
HEK

Description

Total 461 AA. MW: 51.8 kDa (calculated). N-Terminal Flag-tag, 13 extra AA (highlighted). Uniprot P06858 Ala28 to Gly475, variant Asn > Ser318.

Introduction to the Molecule

Lipoprotein lipase (LPL) is the central enzyme in plasma triglyceride hydrolysis and is secreted by macrophages in the subendothelial space. When LPL is produced by macrophages in the vessel wall it has proatherogenic effects. The atherogenic effects of LPL have been attributed mainly to its ability to favor lipid accumulation within macrophages in the atherosclerotic lesion. LPL also promotes the development of atherosclerosis through facilitation of monocyte adhesion to endothelial cells, stimulation of tumor necrosis factor alpha (TNF) secretion and induction of vascular smooth muscle cell proliferation.

Research topic

Lipoprotein metabolism

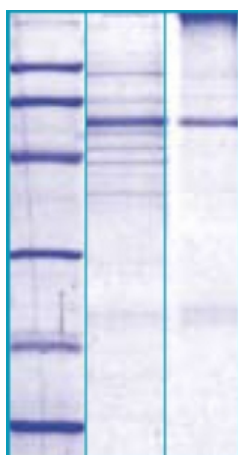
Amino Acid Sequence

HVDYKDDDDK **PAGADQRRDF** IDIESKFALR TPEDTAEDTC HLIPGVAESV ATCHFNNHSSK TFMVIHGWTV TGMYESWVPK
LVAALYKREP DSNVIVVDWL SRAQEHYPVS AGYTKLVGQD VARFINWMEE EFNYPLDNVH LLGYSLGAHA AGIAGSLTNK
KVNRTIGLDP AGPNFEYAEA PSRLSPDDAD FVDVLHTFTR GSPGRSIGIQ KPVGHVDIYP NGGTFQPGCN IGEAIRVIAE
RGLGDVDQLV KCSHERSIHL FIDSLNNEEN PSKAYRCSSK EAFEKGLCLS CRKNRCNNLG YEISKVRAKR SSKMYLKTRS
QMPYKVFHYQ VKIHFSGTES ETHTNQAFEI SLYGTVAESE NIPFTLPEVS TNKTYSFLLIY TEVDIGELLM LKLKWKSDSY
FSWSDWWSSP GFAIQKIRVK AGETQKKVIF CSREKVSHLQ KGKAPAVFVK CHDKSLNKKS G

Source

HEK293

SDS-PAGE gel



14% SDS-PAGE separation of Human LPL

1. M.W. marker - 14, 21, 31, 45, 66, 97 kDa
2. reduced and heated sample, 5µg/lane
3. non-reduced and non-heated sample, 5µg/lane

Formulation

Filtered (0.4 µm) and lyophilized from 0.5 mg/ml in 20mM Tris buffer, 50mM NaCl, pH 7.5

Reconstitution

Add deionized water to prepare a working stock solution of approximately 0.5 mg/mL and let the lyophilized pellet dissolve completely. Product is not sterile! Please filter the product by an appropriate sterile filter before using it in the cell culture.

Shipping

At ambient temperature. Upon receipt, store the product at the temperature recommended below.

Storage, Stability/Shelf Life

Store lyophilized protein at -20°C. Lyophilized protein remains stable until the expiry date when stored at -20°C. Aliquot reconstituted protein to avoid repeated freezing/thawing cycles and store at -80°C for long term storage. Reconstituted protein can be stored at 4°C for a limited period of time; it does not show any change after one week at 4°C.

Quality Control Test

BCA to determine quantity of the protein.

SDS PAGE to determine purity of the protein.

LAL to determine quantity of endotoxin.

Applications

Western blotting