

Lipoprotein Lipase Human E. coli

Product Data Sheet

Type: Recombinant

Source: E. coli

Species: Human

Other names: LPL, LIPD

Cat. No.:

RD172131100 (0.1 mg)

Description

Total 458 AA. MW: 51.61 kDa (calculated). N-Terminal His-tag, 10 extra AA (highlighted).

Introduction to the Molecule

Lipoprotein lipase (LPL) is the central enzyme in plasma triglyceride hydrolysis and is secreted by macrophages in the subendothelial space. When LPL is produced by macrophages in the vessel wall it has proatherogenic effects. The atherogenic effects of LPL have been attributed mainly to its ability to favor lipid accumulation within macrophages in the atherosclerotic lesion. LPL also promotes the development of atherosclerosis through facilitation of monocyte adhesion to endothelial cells, stimulation of tumor necrosis factor alpha (TNF) secretion and induction of vascular smooth muscle cell proliferation.

Research topic

Lipoprotein metabolism

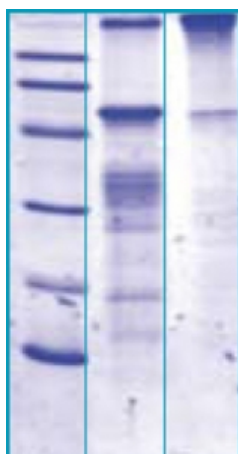
Amino Acid Sequence

MKHHHHHHAS ADQRRDFIDI ESKFALRTPE DTAEDTCHLI PGVAESVATC HFNHSSKTFM VIHGWTVTGM YESWVPKLVA
 ALYKREPDSN VIVVDWLSRA QEHPVSAGY TKLVGQDVAR FINWMEEEFN YPLDNVHLLG YSLGAHAAGI AGSLTNKKVN
 RITGLDPAGP NFEYAEAPSR LSPDDADFVD VLHTFTRGSP GRSIGIQKPV GHVDIYPNGG TFQPGCNIGE AIRVIAERGL
 GDVDQLVKCS HERSIHLFID SLLNEENPSK AYRCSSKEAF EKGLCLSCRK NRCNNLGYEI SKVRAKRSSK MYLKTRSQMP
 YKVFHYQVKI HFSGTESETH TNQAFEISLY GTVAESENIP FTLPEVSTNK TYSFLIYTEV DIGELLMLKL KWKSDSYFSW
 SDWSSSPGFA IQKIRVKAGE TQKKVIFCSR EKVSHLQKGK APAVFVKCHD KSLNKKSG

Source

E. coli

SDS-PAGE gel



14% SDS-PAGE separation of Human LPL

1. M.W. marker - 14, 21, 31, 45, 66, 97 kDa

2. reduced and boiled sample, 5µg / lane

3. non-reduced and non-boiled sample, 5µg / lane

Formulation

Filtered (0.4 µm) and lyophilized from 0.5 mg/ml in 50mM Acetate buffer, pH=4

Reconstitution

Add 0.1M Acetate buffer pH4 to prepare a working stock solution of approximately 0.5 mg/mL and let the lyophilized pellet

dissolve completely. For conversion into higher pH value, we recommend intensive dilution by relevant buffer to a concentration of 10µg/mL. In higher concentrations the solubility of this antigen is limited. Product is not sterile! Please filter the product by an appropriate sterile filter before using it in the cell culture.

Shipping

At ambient temperature. Upon receipt, store the product at the temperature recommended below.

Storage, Stability/Shelf Life

Store lyophilized protein at -80°C. Lyophilized protein remains stable until the expiry date when stored at -80°C. Aliquot reconstituted protein to avoid repeated freezing/thawing cycles and store at -80°C for long term storage. Reconstituted protein can be stored at 4°C for a week.

Quality Control Test

BCA to determine quantity of the protein.

SDS PAGE to determine purity of the protein.

LAL TEST to determine endotoxin level

Applications

Western blotting

Gentaur Molecular Products
Voortstraat 49
1910 Kampenhout, Belgium
<http://www.gentaur-worldwide.com>