

## • Rabbit Anti-Nestin Polyclonal Antibody

Primary Antibodies

### Background:

#### Neural Stem Cell Marker

Nestin is a Class VI intermediate filament expressed in the developing central nervous system (CNS) in early embryonic neuroepithelial stem cells. This protein has been widely used as a predominant marker for stem / progenitor cells, glioma cells, and tumor endothelial cells in the mammalian CNS. Furthermore, it is a superior angiogenic marker to evaluate neovascularity of endothelial cells in tumor.

#### Source/Purification:

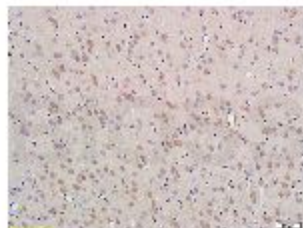
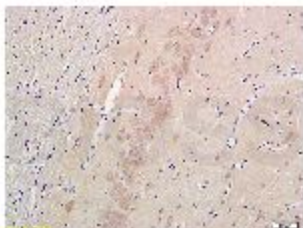
KLH conjugated synthetic peptide derived from rat Nestin. Was purified by Protein A and peptide affinity chromatography.

**Storage:** Prepared as lyophilized powder or liquid and shipped on ice. Store at -20°C for one year.

#### Reconstitution:

If the antibody is in liquid form, no reconstitution needed.

Reconstitution is only required for the lyophilized antibody. Please refer to the reconstitution instruction card in the package.



**Size:** 100ul or 100ug lyophilized

**Concentration:** 1ug/ul

**Host:** Rabbit

**Reactivities:** Mouse,Rat,

#### Application:

- WB(1:100-500)
- ELISA(1:500-1000)
- IP(1:20-100)
- IHC-P(1:100-500)
- IHC-F(1:100-500)
- IF(1:100-500)
- Not yet tested in other applications.  
Optimal working dilutions must be determined by the end user.

**Antibody Type:** Polyclonal

**Isotype:** IgG

**Molecular Weight:** 209kDa

#### Preservatives:

10ug/uL BSA and 0.1% NaN3.

For research use only. CAUTION: Not for human or animal therapeutic or diagnostic use.