

bs-0071R-HRP

• Rabbit Anti-Neuropeptide Y Polyclonal Antibody, HRP conjugated

Conjugated Primary Antibodies

Background:

Neurobiology

Neuropeptide Y (NPY) is a 36 amino acid peptide neurotransmitter found in the brain and autonomic nervous system. NPY has been associated with a number of physiologic processes in the brain, including the regulation of energy balance, memory and learning, and epilepsy. The main effect is increased food intake and decreased physical activity. NPY is secreted by the hypothalamus, and in addition to increasing food intake, it increases the proportion of energy stored as fat and blocks nociceptive signals to the brain. NPY also augments the vasoconstrictor effects of noradrenergic neurons.

Purification: Was purified by Protein A and peptide affinity chromatography.

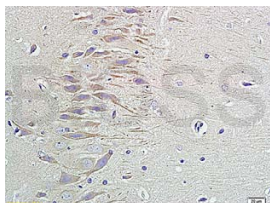
Storage:

Aqueous buffered solution containing 100ug/ml BSA, 50% glycerol and less than 0.01% Gentamicin. Store at -20°C for 12 months. [Product without BSA and/or Gentamicin is available for special order.]

Reconstitution:

If the antibody is in liquid form, no reconstitution needed.

Reconstitution is only required for the lyophilized antibody. Please refer to the reconstitution instruction card in the package.



For full size images and description please click [HERE](#).

Size: 100ul

Concentration: 1ug/uL

Host: Rabbit

Reactivities:

Human, Mouse, Rat, Bovine, Rabbit,

Application:

- ELISA(1:500-1000)
- IHC-P(1:100-500)
- Not yet tested in other applications. Optimal working dilutions must be determined by the end user.

Antibody Type: Polyclonal

Isotype: IgG

Molecular Weight: 8kDa

Note:

For research use only. CAUTION: Not for human or animal therapeutic or diagnostic use.