

bs-0116R-PE-Cy3

• Rabbit Anti-ER-beta Polyclonal Antibody, PE-Cy3 conjugated

Conjugated Primary Antibodies

Background:

Estrogen Receptor beta is a recent discovery, initially cloned and characterized from testis. Estrogen Receptor beta is highly homologous to Estrogen Receptor alpha; the ligand and DNA binding domains are highly conserved, while the amino terminus (transactivation domain), has diverged significantly. Estrogen Receptor beta binds estrogen with high affinity and regulates estrogen specific gene activation through direct interaction with estrogen response elements (EREs).

Purification: Was purified by Protein A and peptide affinity chromatography.

Storage:

Prepared as lyophilized powder or liquid and shipped on ice. Store at -20°C for one year. Protect from light.

Reconstitution:

If the antibody is in liquid form, no reconstitution needed.

Reconstitution is only required for the lyophilized antibody. Please refer to the reconstitution instruction card in the package.

Size: 100ul or 100ug lyophilized

Concentration: 1ug/uL

Host: Rabbit

Reactivities: Human, Mouse, Rat, Pig, Cow,

Application:

- IF (1:100-500)
- Not yet tested in other applications. Optimal working dilutions must be determined by the end user.

Antibody Type: Polyclonal

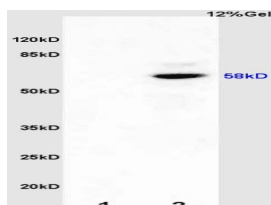
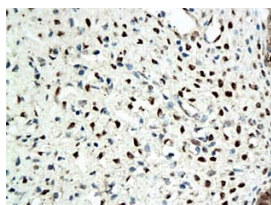
Isotype: IgG

Molecular Weight: 58kDa

Preservatives:

10ug/uL BSA and 0.1% NaN₃.

For research use only. CAUTION: Not for human or animal therapeutic or diagnostic use.



For full size images and description please click [HERE](#).