

• Rabbit Anti-Tubulin-alpha Polyclonal Antibody

Primary Antibodies

Background:

Tubulin is a major cytoskeleton that has five distinct forms, designated alpha, beta, gamma, delta and epsilon tubulin. The alpha and beta tubulins form a heterodimer that polymerize into the cylindrical microtubule fibers. Both alpha and beta tubulin bind GTP. Only beta tubulin hydrolyzes GTP to GDP. This hydrolysis is a process that is linked to tubulin polymerization and microtubule formation. The alpha tubulin isomer can be modified by addition of a C-terminal tyrosine residue. This modification may influence polymerization rates. The gamma tubulin isomer is localized to centrosomes which compose the heart of the microtubule organizing center from which microtubule fibers emanate.

Source/Purification:

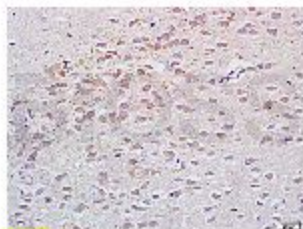
KLH conjugated synthetic peptide derived from human Tubulin-alpha C-terminus. Was purified by Protein A and peptide affinity chromatography.

Storage: Prepared as lyophilized powder or liquid and shipped on ice. Store at -20°C for one year.

Reconstitution:

If the antibody is in liquid form, no reconstitution needed.

Reconstitution is only required for the lyophilized antibody. Please refer to the reconstitution instruction card in the package.



Size: 100ul or 100ug lyophilized

Concentration: 1ug/ul

Host: Rabbit

Reactivities: Human, Mouse, Rat,

Application:

- WB(1:100-500)
- ELISA(1:500-1000)
- IP(1:20-100)
- IHC-P(1:100-500)
- IHC-F(1:100-500)
- IF(1:100-500)
- Not yet tested in other applications.
Optimal working dilutions must be determined by the end user.

Antibody Type: Polyclonal

Isotype: IgG

Molecular Weight: 55kDa

Preservatives:

10ug/uL BSA and 0.1% NaN₃.

For research use only. CAUTION: Not for human or animal therapeutic or diagnostic use.