

• Rabbit Anti-Myelin Protein Zero Polyclonal Antibody

Primary Antibodies

Background:

Myelin protein-zero is the major structural protein of peripheral myelin, accounting for more than 50% of the protein present in the sheath of peripheral nerves. Expression of the gene encoding Myelin protein-zero (MPZ) is restricted to Schwann cells; MPZ is not found in the CNS. An integral membrane glycoprotein of ~28kDa, Myelin protein-zero is thought to link adjacent lamellae and thereby stabilize the myelin assembly. The other 3 major components of myelin are myelin basic protein, myelin proteolipid protein and myelin-associated glycoprotein.

Source/Purification:

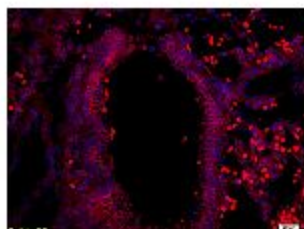
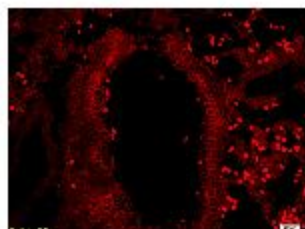
KLH conjugated synthetic peptide derived from human P0 protein (209-228aa). Was purified by Protein A and peptide affinity chromatography.

Storage: Prepared as lyophilized powder or liquid and shipped on ice. Store at -20°C for one year.

Reconstitution:

If the antibody is in liquid form, no reconstitution needed.

Reconstitution is only required for the lyophilized antibody. Please refer to the reconstitution instruction card in the package.



Size: 100ul or 100ug lyophilized

Concentration: 1ug/uL

Host: Rabbit

Reactivities:

Human, Mouse, Rat, Dog, Pig, Horse, Rabbit, Guinea Pig, Bovine,

Application:

- WB(1:100-500)
 - ELISA(1:500-1000)
 - IP(1:20-100)
 - IHC-P(1:100-500)
 - IHC-F(1:100-500)
 - IF(1:100-500)
 - Not yet tested in other applications.
- Optimal working dilutions must be determined by the end user.

Antibody Type: Polyclonal

Isotype: IgG

Molecular Weight: 24kDa

Preservatives:

10ug/uL BSA and 0.1% NaN3.

For research use only. CAUTION: Not for human or animal therapeutic or diagnostic use.