

## • Rabbit Anti-Integrin beta 3/CD61 Polyclonal Antibody

Primary Antibodies

### Background:

The ITGB3 (Integrin beta chain beta 3) protein product is the integrin beta chain beta 3. Integrins are integral cell-surface proteins composed of an alpha chain and a beta chain. A given chain may combine with multiple partners resulting in different integrins. Integrin beta 3 is found along with the alpha IIb chain in platelets. Integrins are known to participate in cell adhesion as well as cell-surface mediated signalling.

### Source/Purification:

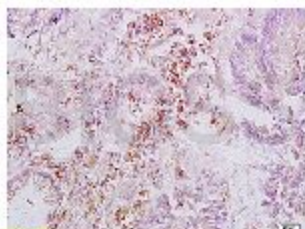
KLH conjugated synthetic peptide derived from human Integrin beta 3. Was purified by Protein A and peptide affinity chromatography.

**Storage:** Prepared as lyophilized powder or liquid and shipped on ice. Store at -20°C for one year.

### Reconstitution:

If the antibody is in liquid form, no reconstitution needed.

Reconstitution is only required for the lyophilized antibody. Please refer to the reconstitution instruction card in the package.



**Size:** 100ul or 100ug lyophilized

**Concentration:** 1ug/uL

**Host:** Rabbit

### Reactivities:

Human, Mouse, Pig, Cow, Rabbit, Bovine,

### Application:

- WB(1: 100-500)
- ELISA(1:500-1000)
- IP(1:20-100)
- IHC-P(1: 100-500)
- IHC-F(1: 100-500)
- FACS(1: 100-500)
- IF(1: 100-500)
- Not yet tested in other applications.  
Optimal working dilutions must be determined by the end user.

**Antibody Type:** Polyclonal

**Isotype:** IgG

**Molecular Weight:** 84kDa

### Preservatives:

10ug/uL BSA and 0.1% NaN3.

For research use only. CAUTION: Not for human or animal therapeutic or diagnostic use.