

• Rabbit Anti-GLUT4 Polyclonal Antibody

Primary Antibodies

Background:

GLUT4 is the facilitated glucose transporter expressed exclusively in adipocytes and muscle cells, and is also known as the "insulin-responsive" glucose transporter. GLUT4 translocates from an ill-defined intracellular compartment to the plasma membrane in response to insulin. The total cellular content of GLUT4 is significantly decreased in adipose cells from many patients with Type II diabetes mellitus, and animals with some types of experimental diabetes.

Source/Purification:

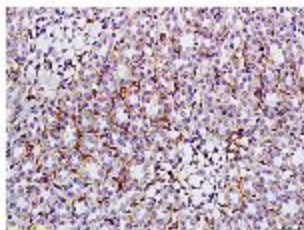
KLH conjugated synthetic peptide derived from human GLUT4 C-terminus. Was purified by Protein A and peptide affinity chromatography.

Storage: Prepared as lyophilized powder or liquid and shipped on ice. Store at -20°C for one year.

Reconstitution:

If the antibody is in liquid form, no reconstitution needed.

Reconstitution is only required for the lyophilized antibody. Please refer to the reconstitution instruction card in the package.



Size: 100ul or 100ug lyophilized

Concentration: 1ug/uL

Host: Rabbit

Reactivities:

Human, Mouse, Rat, Dog, Pig, Cow, Rabbit, Sheep,

Application:

- WB(1:100-500)
- ELISA(1:500-1000)
- IP(1:20-100)
- IHC-P(1:100-500)
- IHC-F(1:100-500)
- IF(1:100-500)
- Not yet tested in other applications.
Optimal working dilutions must be determined by the end user.

Antibody Type: Polyclonal

Isotype: IgG

Molecular Weight: 54kDa

Preservatives:

10ug/uL BSA and 0.1% NaN₃.

For research use only. CAUTION: Not for human or animal therapeutic or diagnostic use.