

## bs-0406R-HRP

### • Rabbit Anti-IGFBP5 Polyclonal Antibody, HRP conjugated

Conjugated Primary Antibodies

#### Background:

IGFBP5 is one of a family of proteins that bind to insulin-like growth factors (IGFs). IGFBP5 is a multifunctional protein which acts not only as a traditional binding protein but also functions as a growth factor independent of IGFs to stimulate bone formation. Currently there are seven named IGF-BPs that form high affinity complexes with both IGF1 and IGFII. IGFBP5 is the major IGF-binding protein present in bone tissue and helps potentiate the action of IGF1 on smooth muscle cells, fibroblasts or osteoblasts. Data shows that IGFBP5 acts as a growth inhibitor and pro-apoptotic agent in breast cancer cells. IGFBP5 overexpressing mice show an increase in neonatal mortality, reduced female fertility, whole-body growth inhibition and retarded muscle development.

**Purification:** Was purified by Protein A and peptide affinity chromatography.

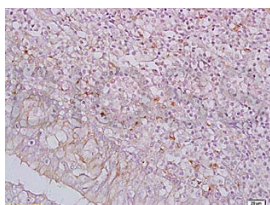
#### Storage:

Aqueous buffered solution containing 100ug/ml BSA, 50% glycerol and less than 0.01% Gentamicin. Store at -20°C for 12 months. [Product without BSA and/or Gentamicin is available for special order.]

#### Reconstitution:

If the antibody is in liquid form, no reconstitution needed.

Reconstitution is only required for the lyophilized antibody. Please refer to the reconstitution instruction card in the package.



For full size images and description please click [HERE](#).

**Size:** 100ul

**Concentration:** 1ug/uL

**Host:** Rabbit

#### Reactivities:

Human, Mouse, Rat, Dog, Pig, Bovine, Sheep,

#### Application:

- WB(1:100-500)
  - ELISA(1:500-1000)
  - IHC-P(1:100-500)
  - Not yet tested in other applications.
- Optimal working dilutions must be determined by the end user.

**Antibody Type:** Polyclonal

**Isotype:** IgG

**Molecular Weight:** 30kDa

#### Note:

For research use only. CAUTION: Not for human or animal therapeutic or diagnostic use.